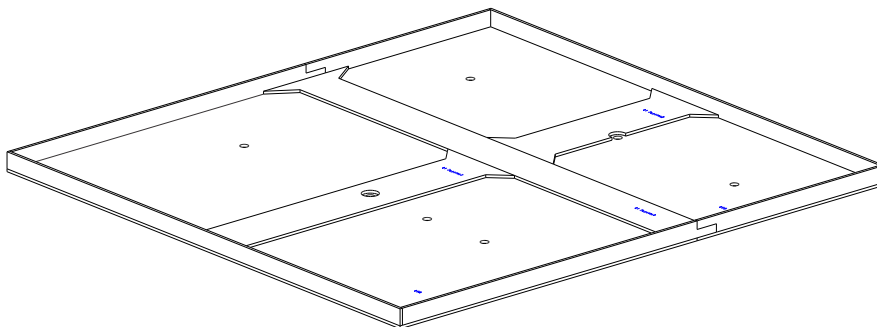
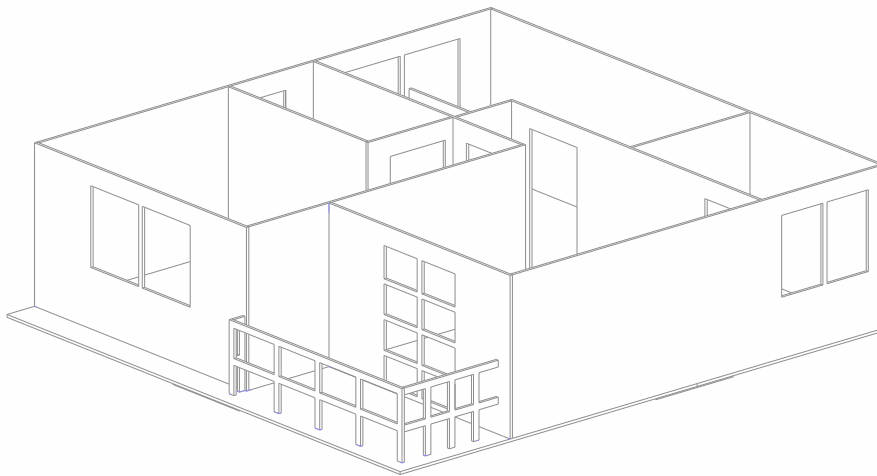


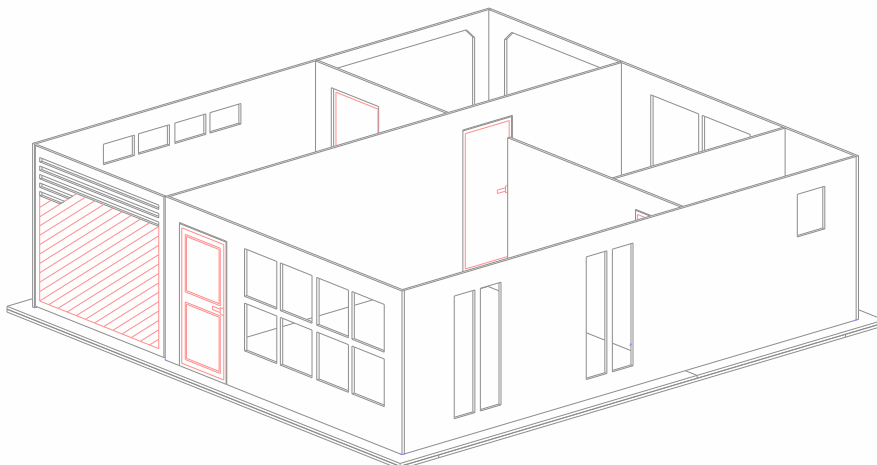


Manual de Montagem Sobrado 1:14

Laje Inferior



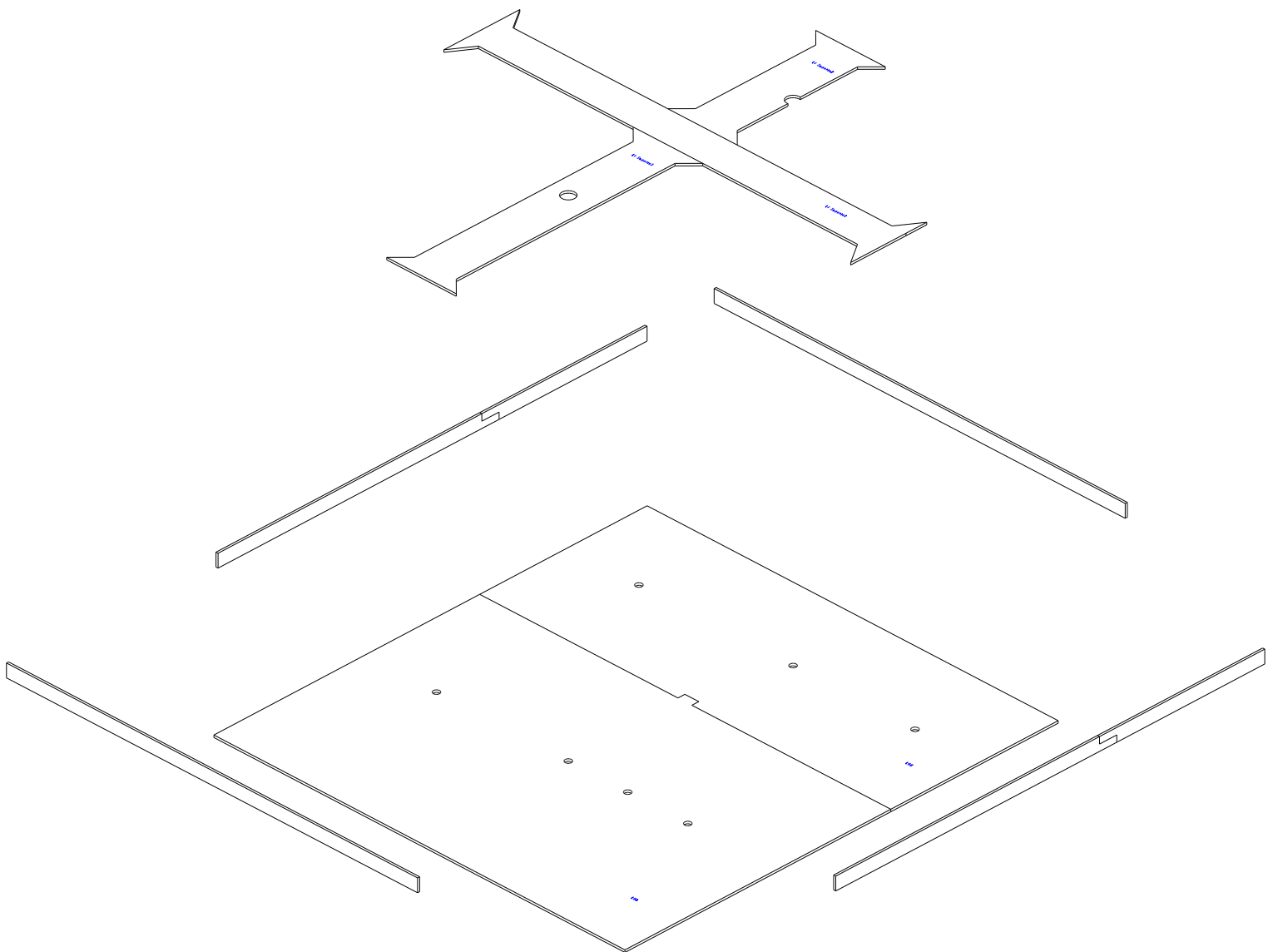
→ Laje Inferior





Laje Inferior

Vista Explodida
Todas as peças da Laje Inferior



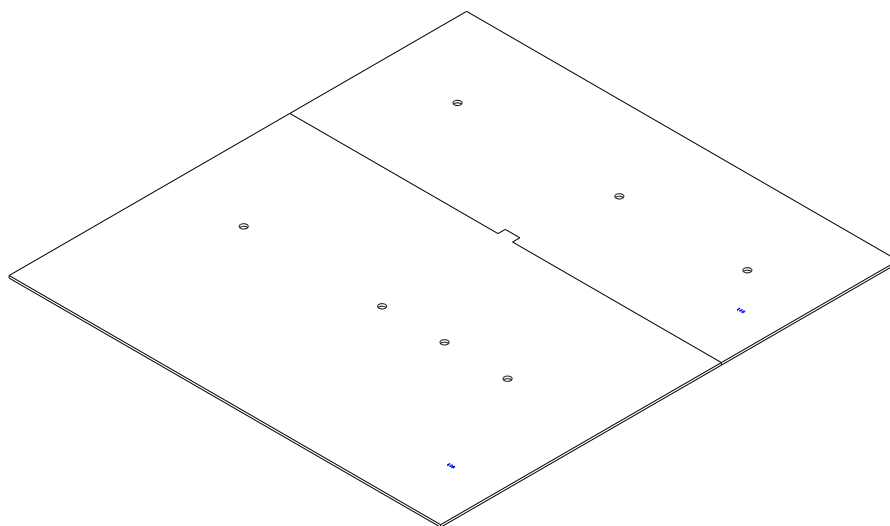
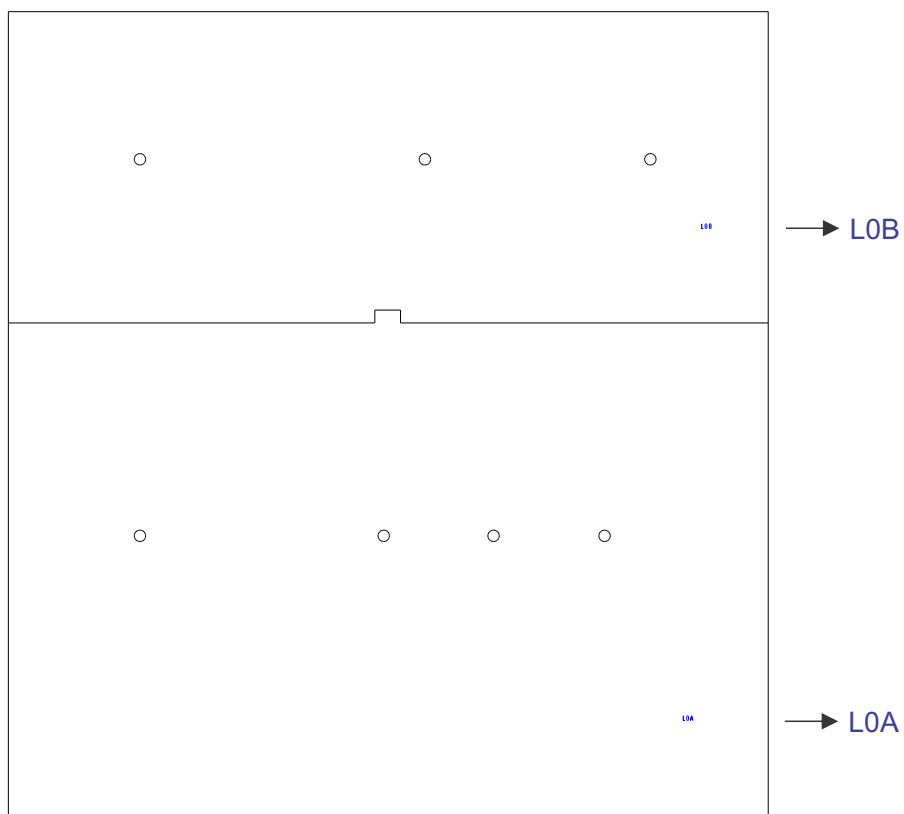


Laje Inferior

Passo 01

Separar as peças L0A e L0B

Encaixe as duas peças como na imagem abaixo.



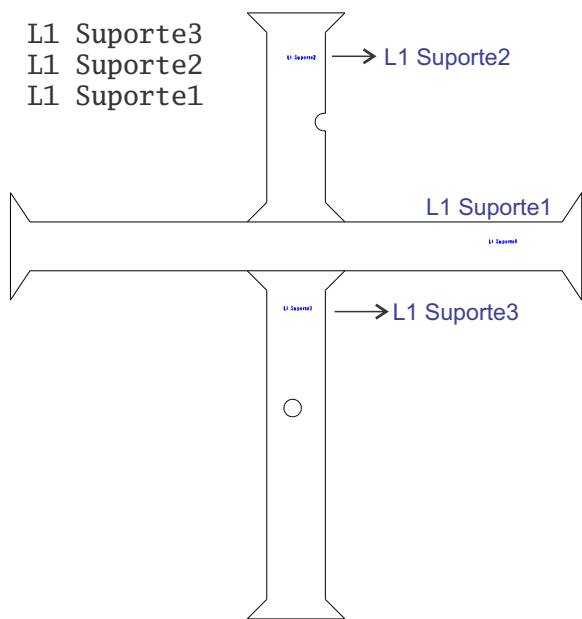


Laje Inferior

Passo 02A

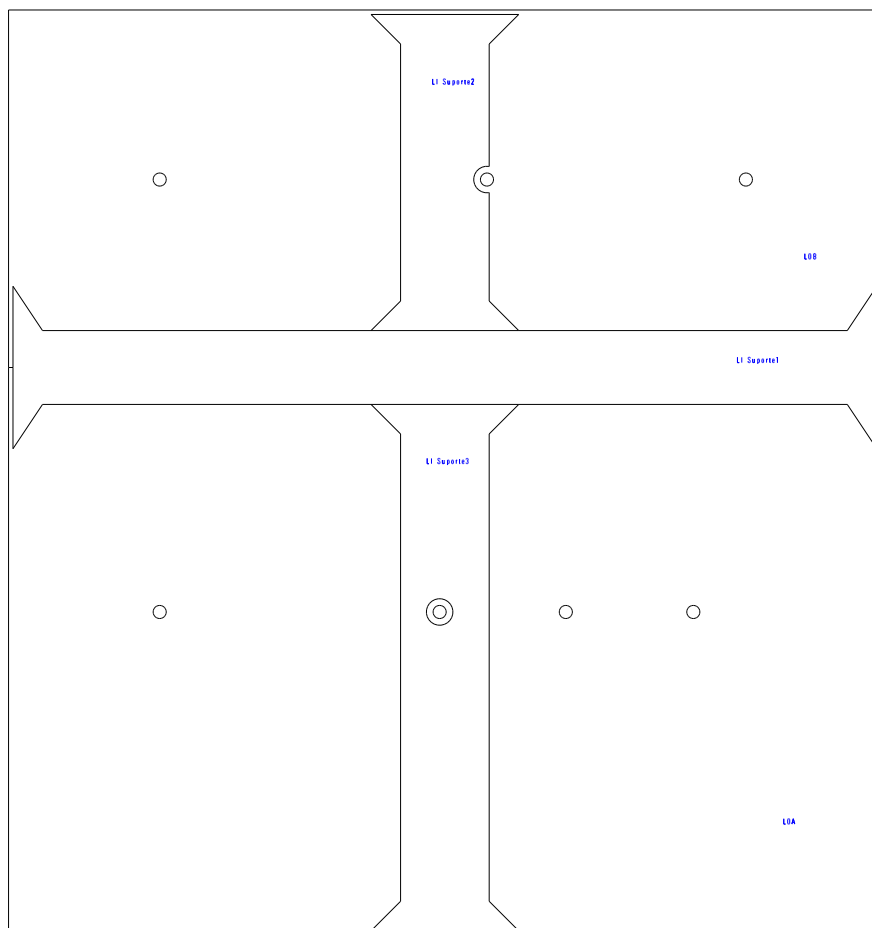
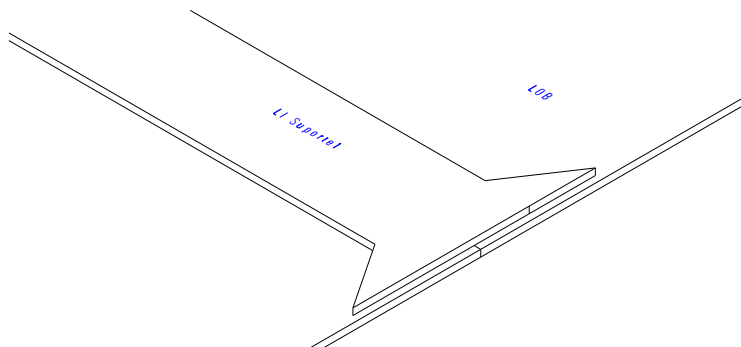
Separar as peças:

- L1 Suporte3
- L1 Suporte2
- L1 Suporte1



Passo 02B

Estes Suportes serão colados nas peças LOA e LOB, mas não encostarão na borda, há um espaço de 3mm

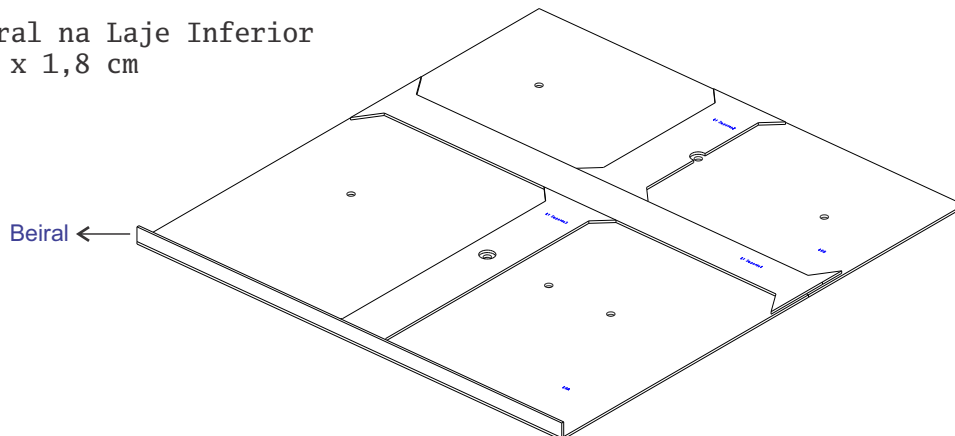




Laje Inferior

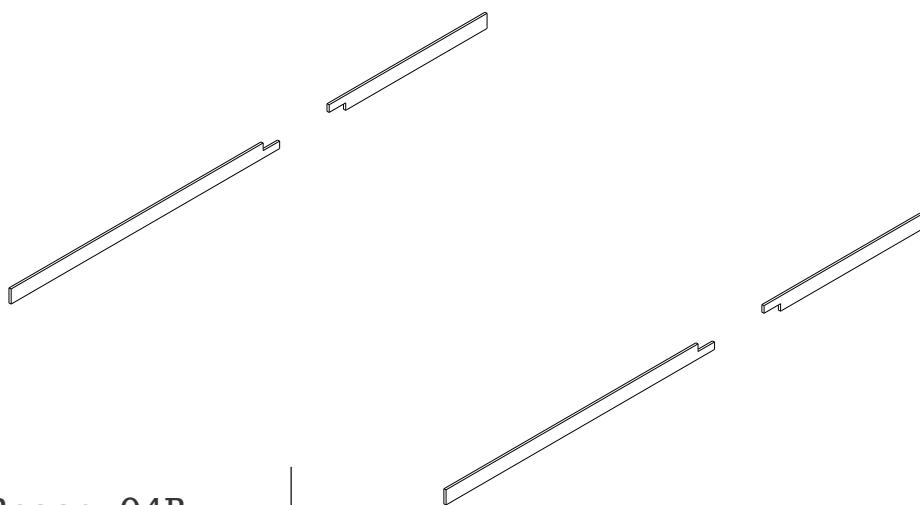
Passo 03

Cole Este Beiral na Laje Inferior
Tamanho 59 cm x 1,8 cm



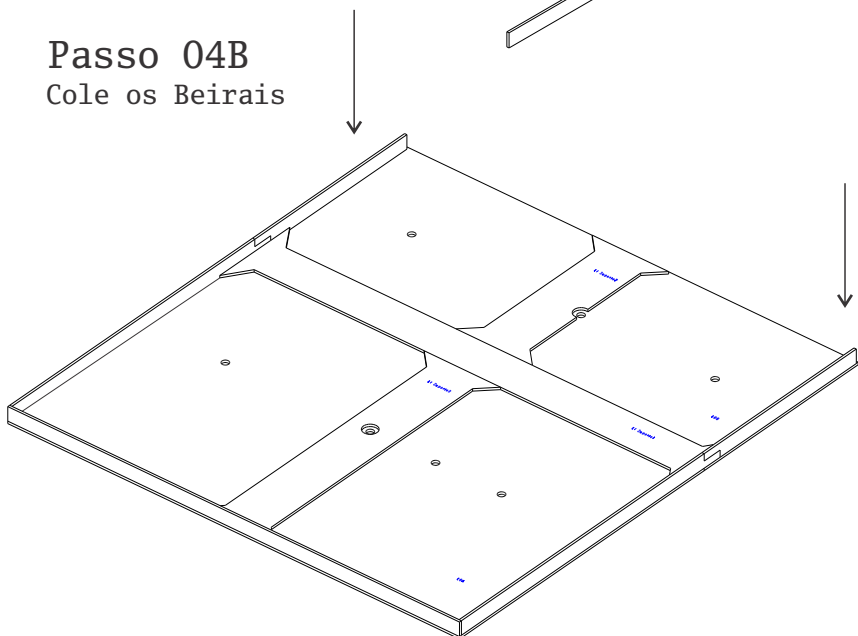
Passo 04A

Separe estas 04 peças do beiral



Passo 04B

Cole os Beirais



Cole o último beiral

