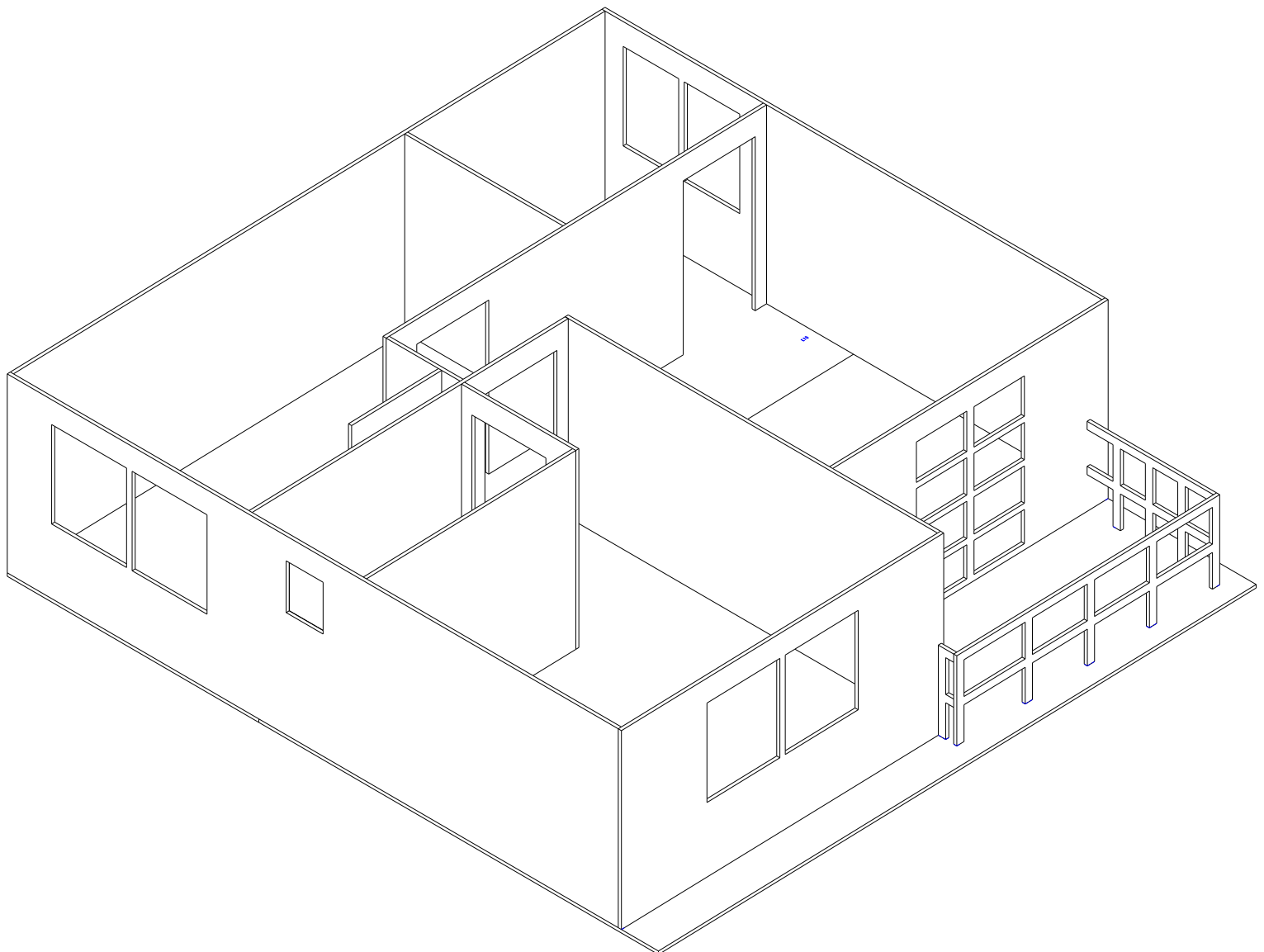




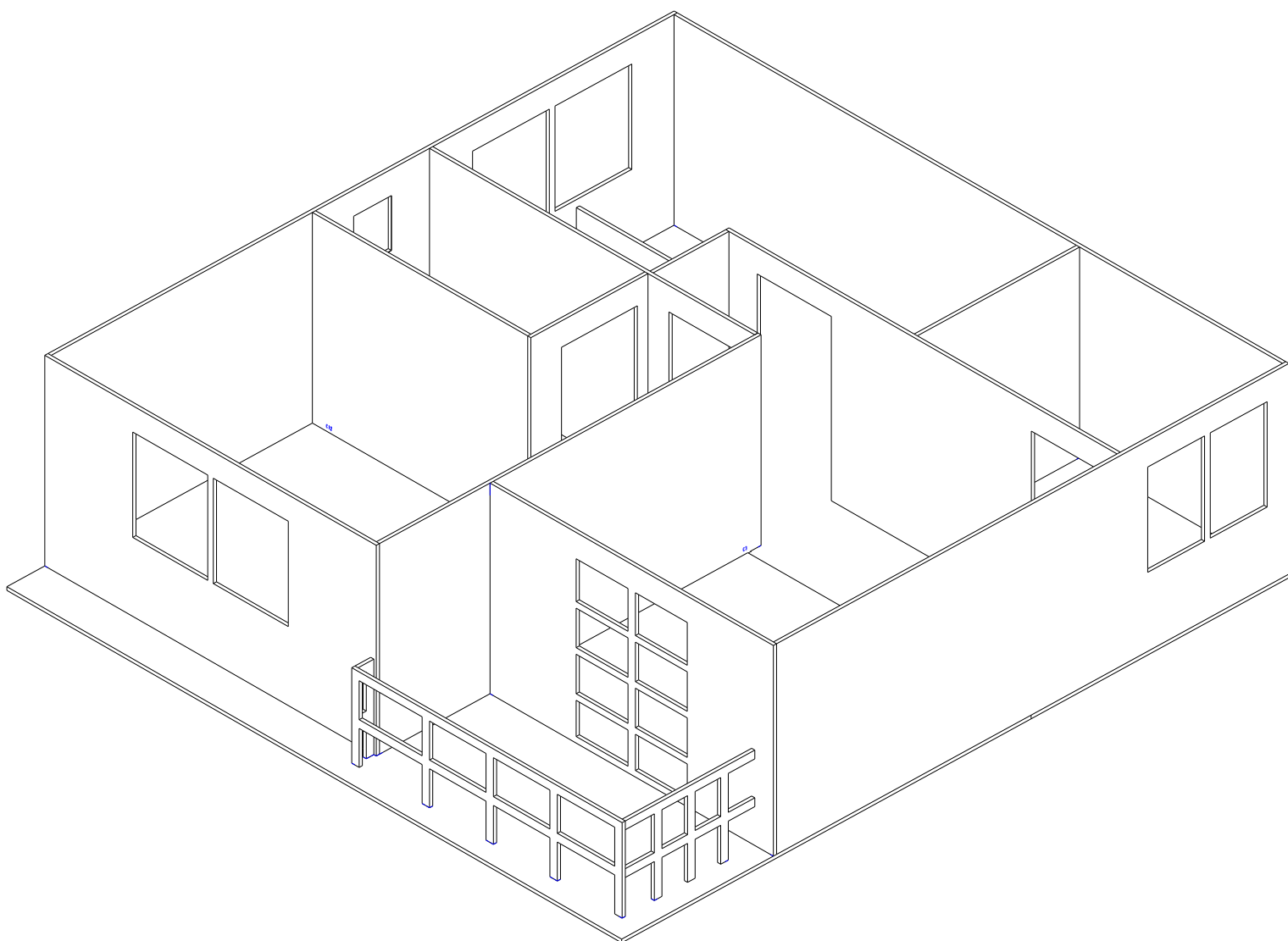
Manual de Montagem Sobrado 1:14

Andar Superior



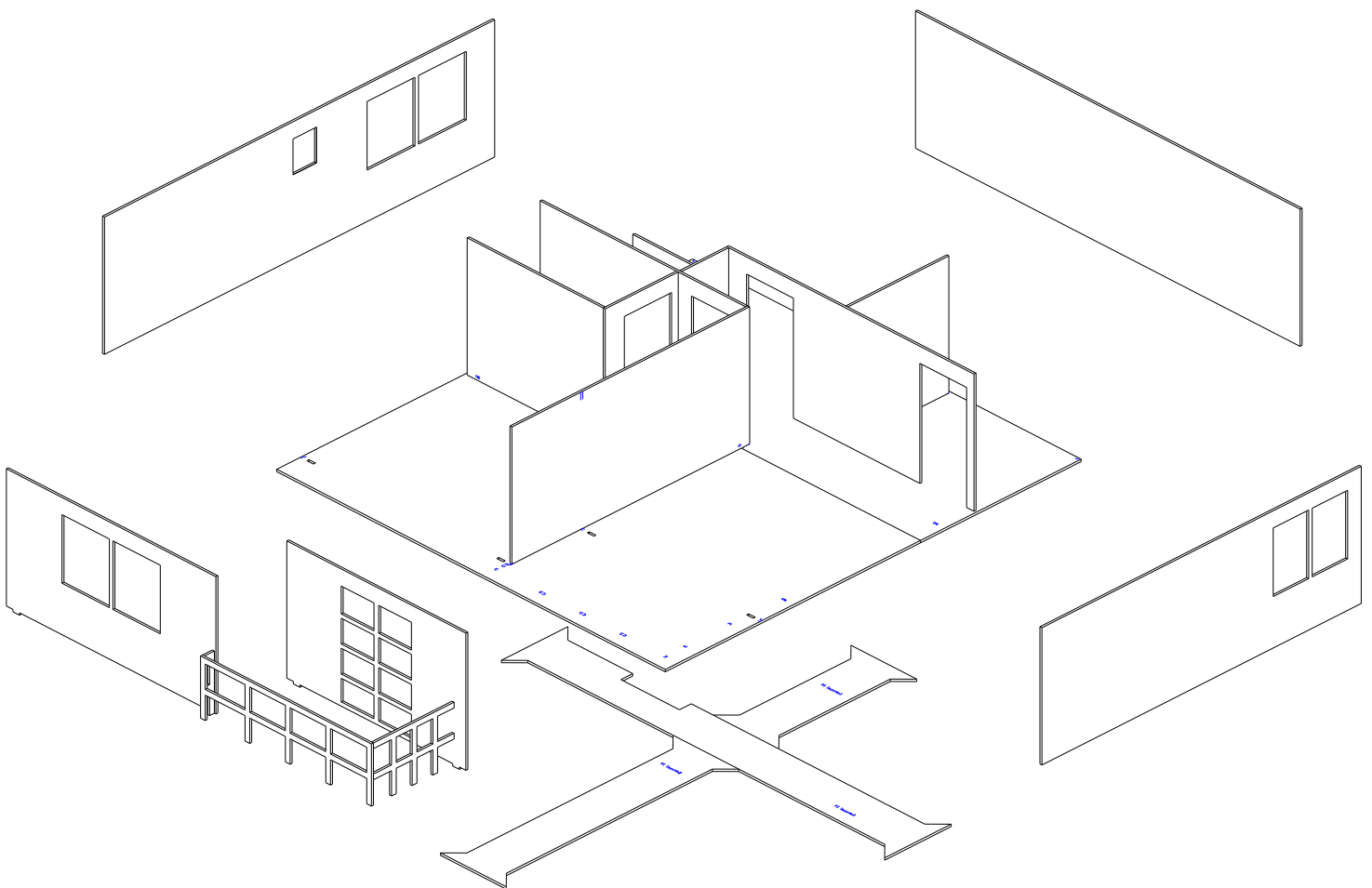


Vista do Andar Superior





Vista Explodida
Todas as peças do Piso Superior

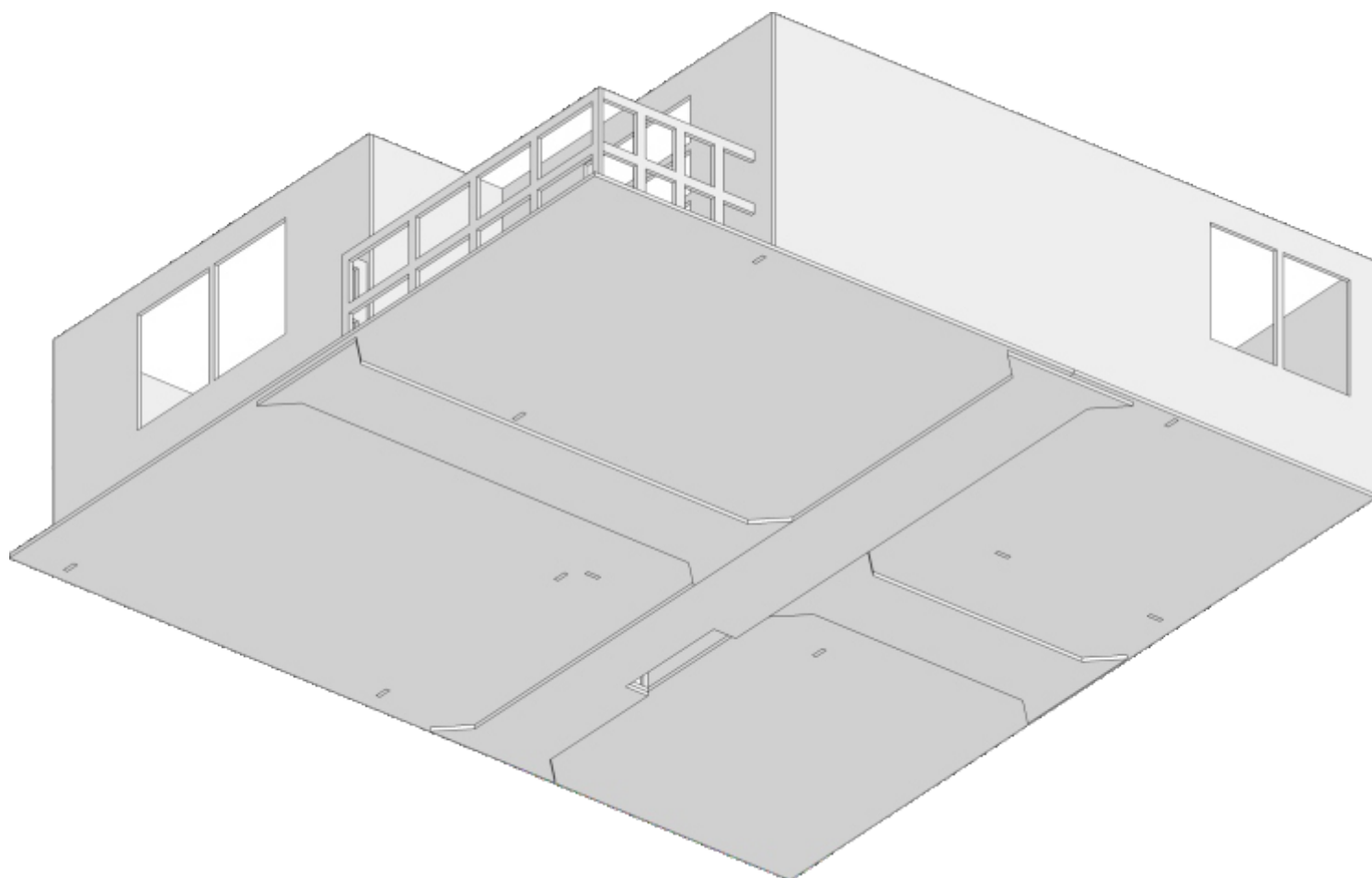




Andar Superior

Vista de baixo do piso onde será colada todas as paredes do andar superior.

Este reforço na parte inferior do piso é importante, deixará todo o andar superior bem rígido.





Passo 01

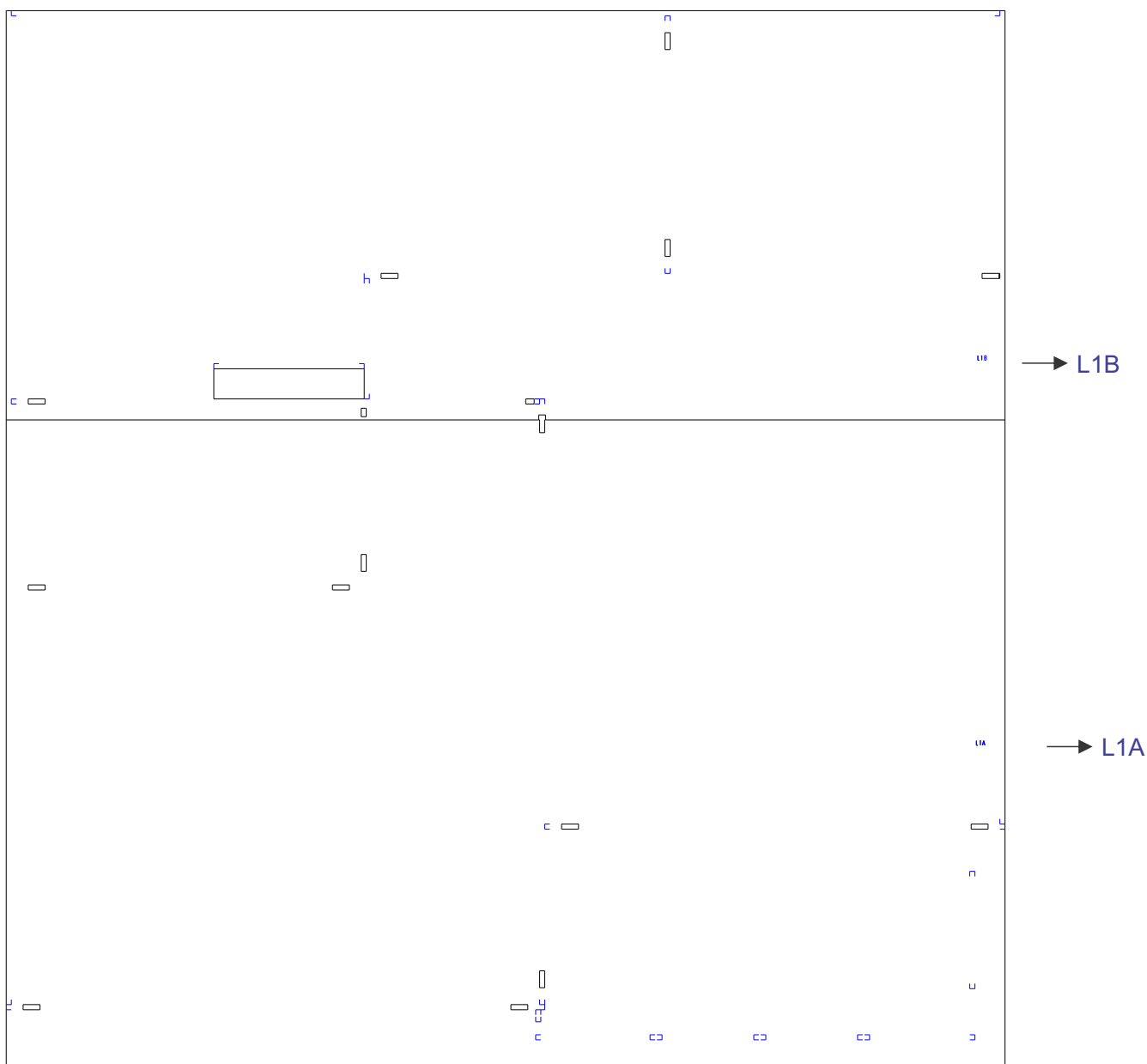
Separar as peças L1A e L1B

Alinhe as duas peças como na imagem abaixo.

Estes riscos mostram a face superior das peças.

O buracos vazados servem para serem encaixadas as paredes.

Os riscos servem para alinhar as peças no momento da colagem.

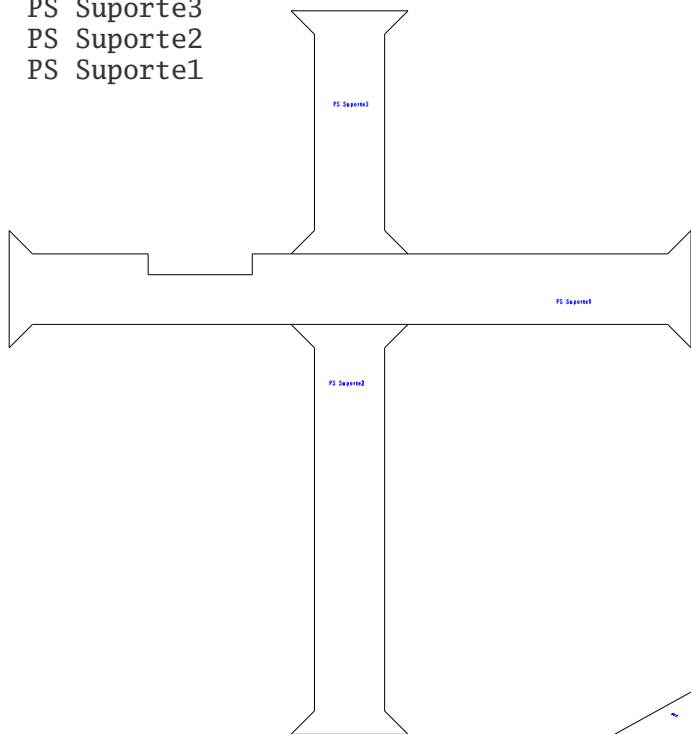




Passo 02A

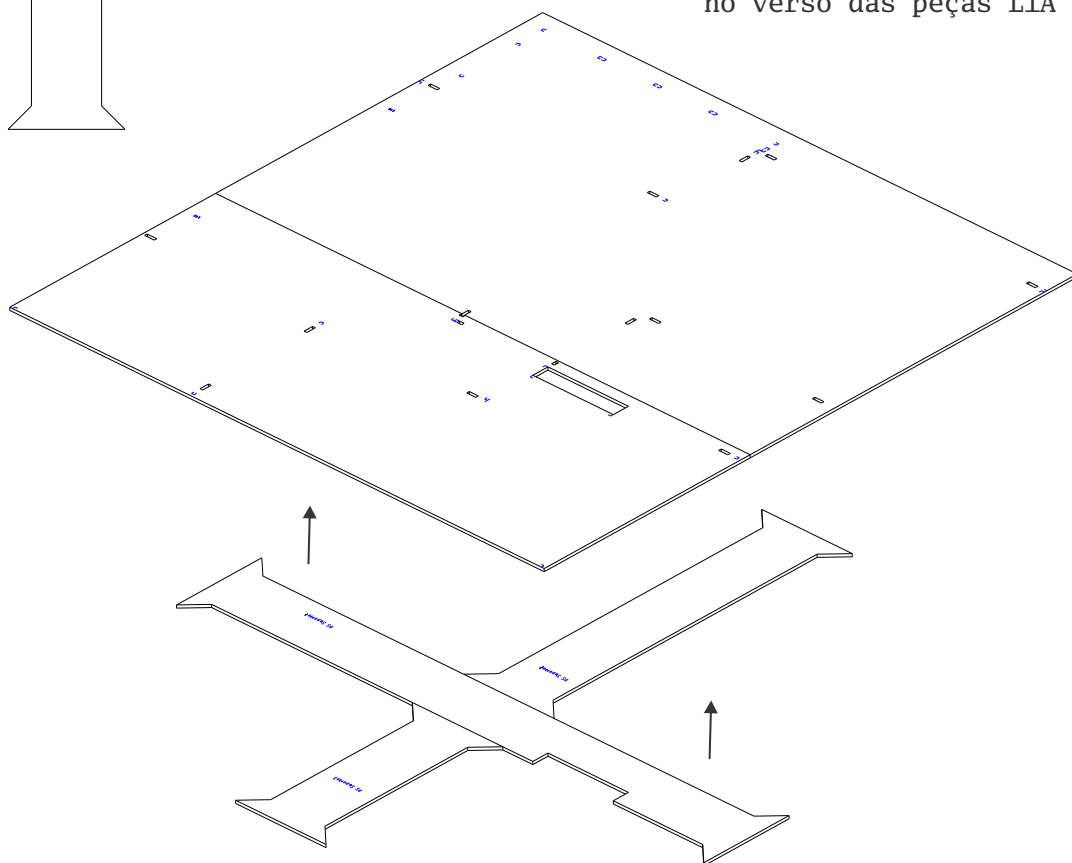
Separar as peças:

- PS Suporte3
- PS Suporte2
- PS Suporte1



Passo 02B

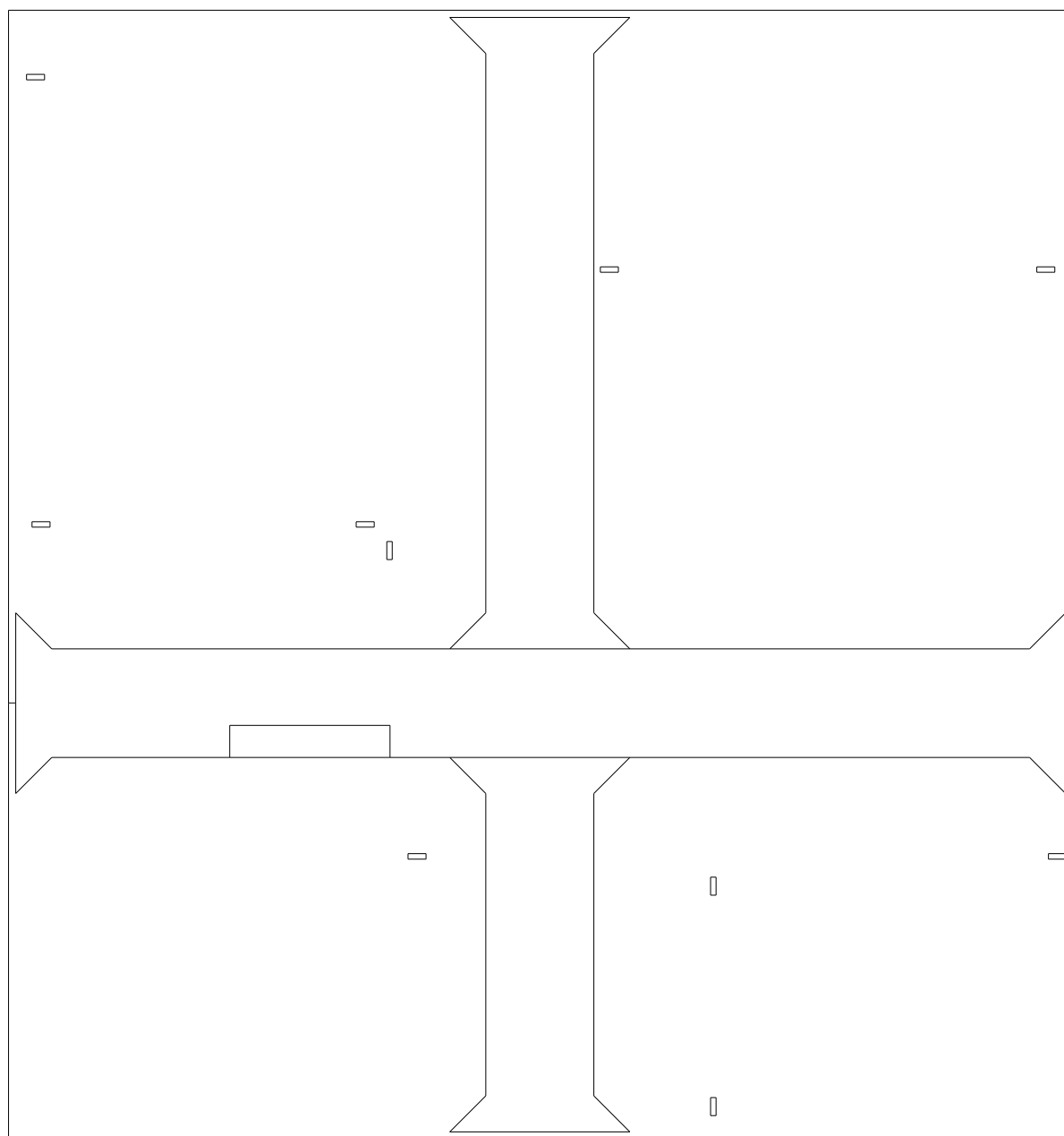
Estes Suportes serão colados por trás do piso, ou seja, no verso das peças L1A e L1B





Passo 02C

Esta é a parte de trás das peças L1A e L1B. Os suportes devem ser colados. Veja que a peça não encosta nas bordas.

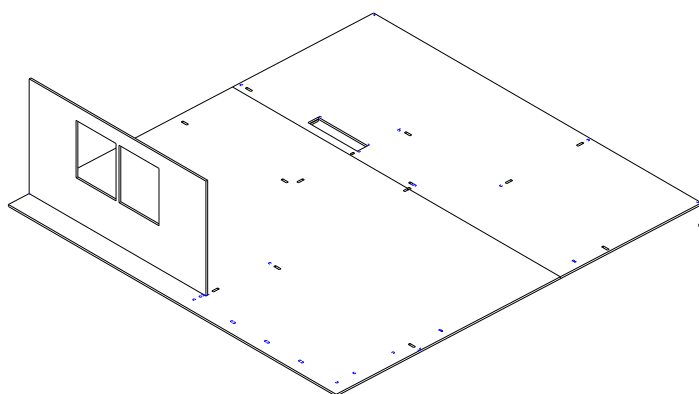




Andar Superior

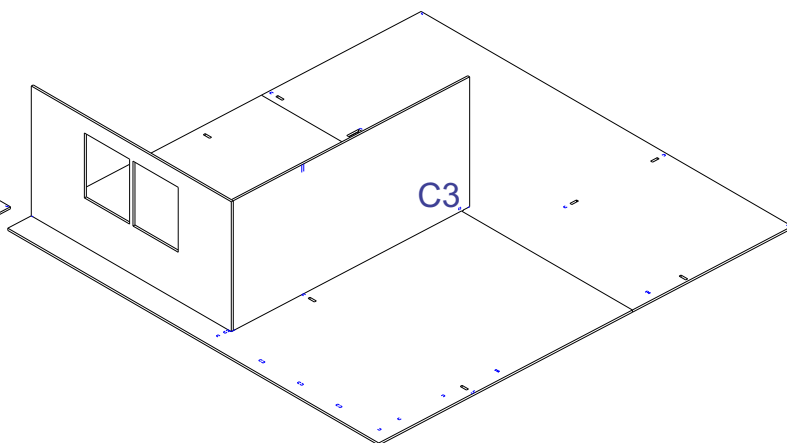
Passo 03

Passa cola na borda inferior da peça (Janela)



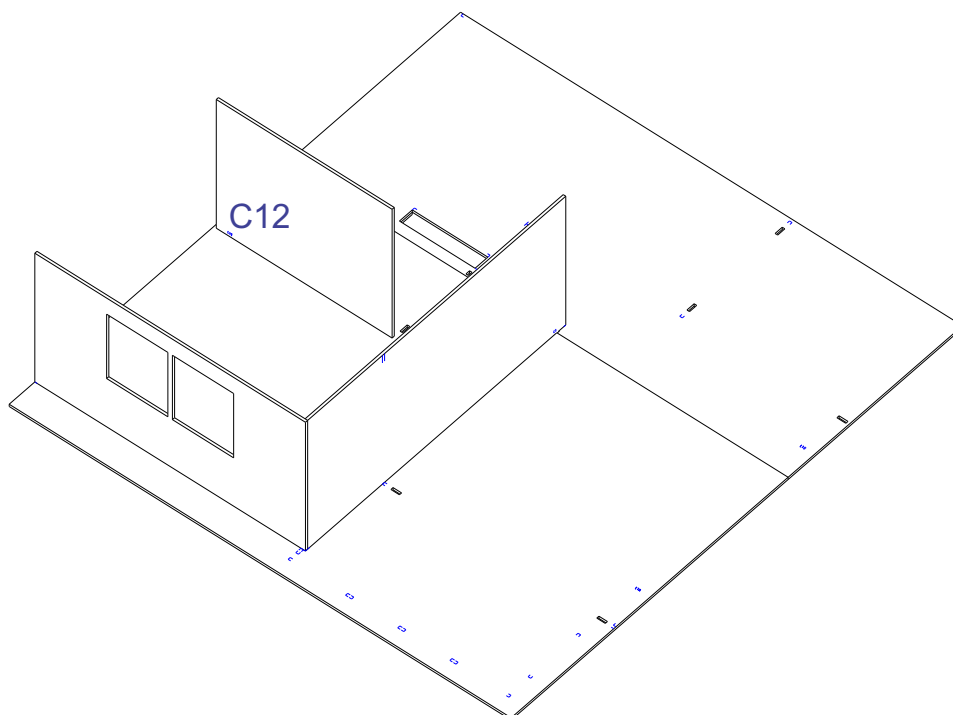
Passo 04

Passa cola na borda inferior e na borda lateral da peça C3, cole com a janela.



Passo 05

Colar a peça C12

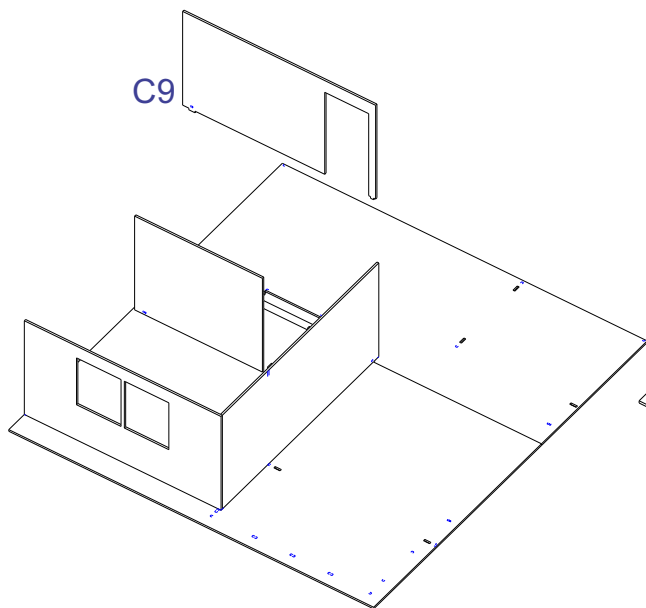




Andar Superior

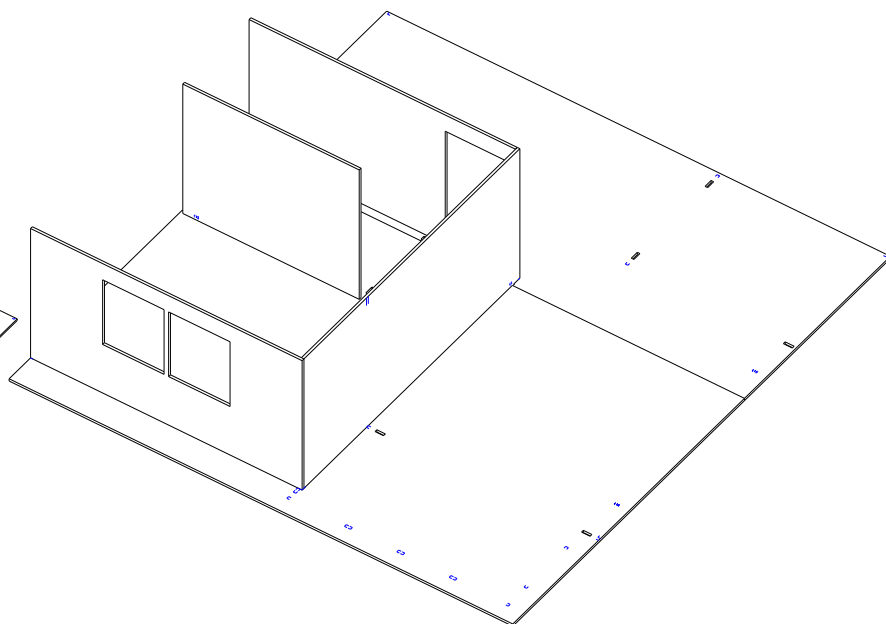
Passo 06A

Separe a peça C9



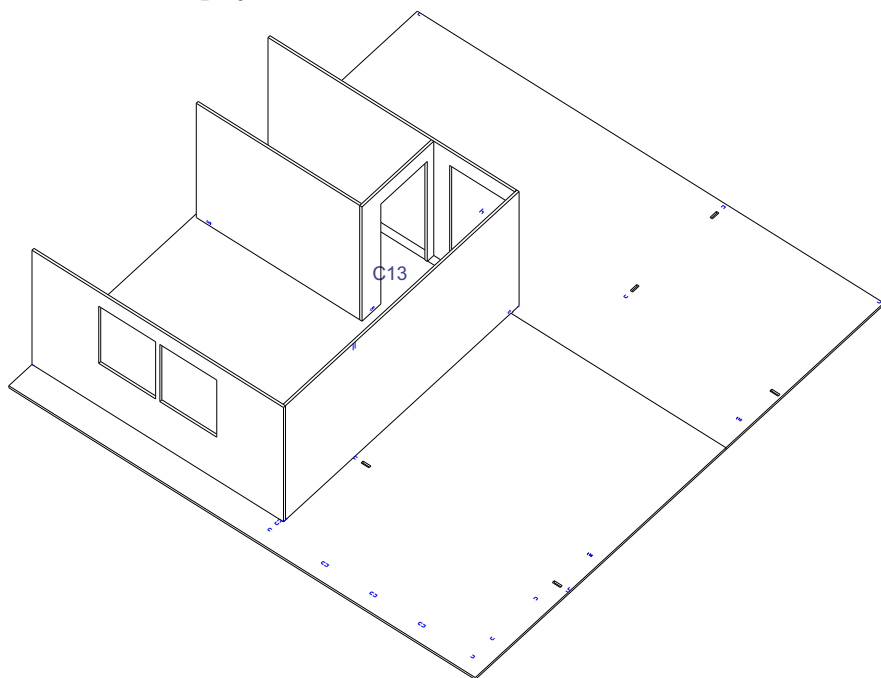
Passo 06B

Cole a Peça C9



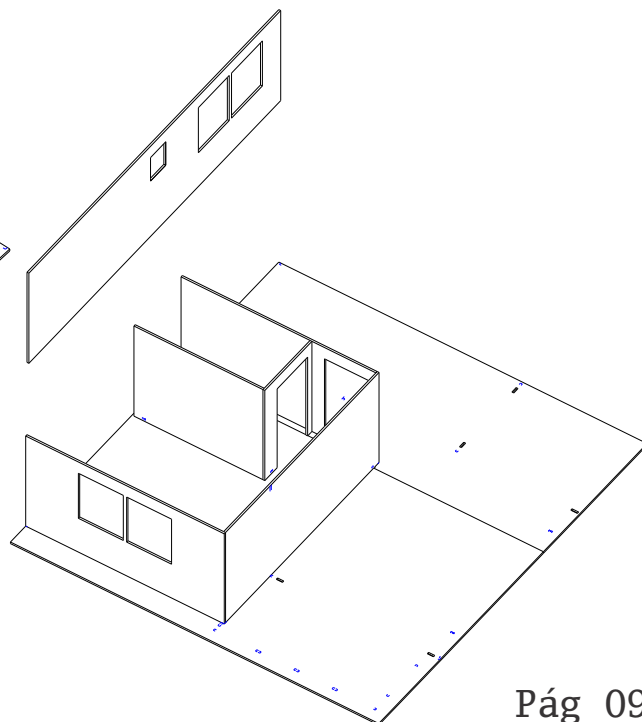
Passo 07

Colar a peça C13



Passo 08A

Separe a peça da parede com janelas

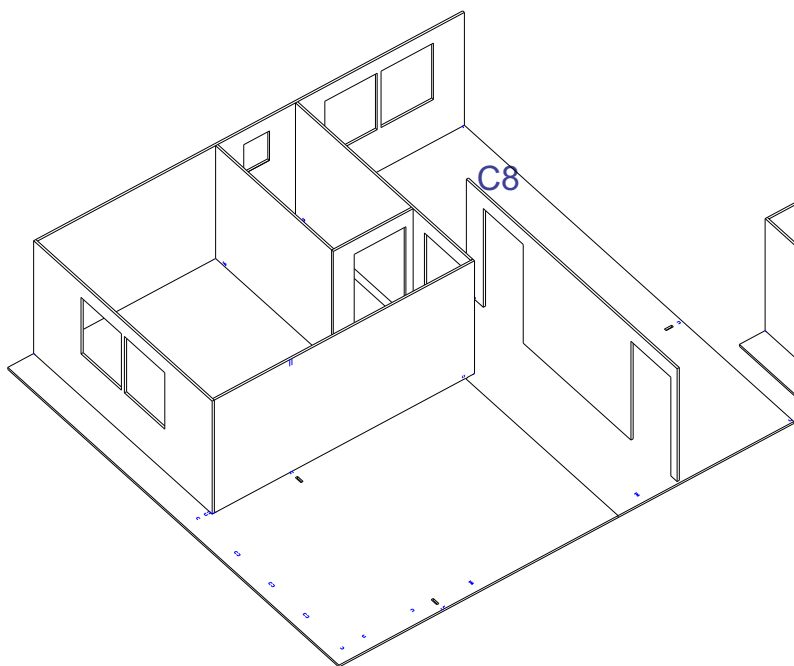




Andar Superior

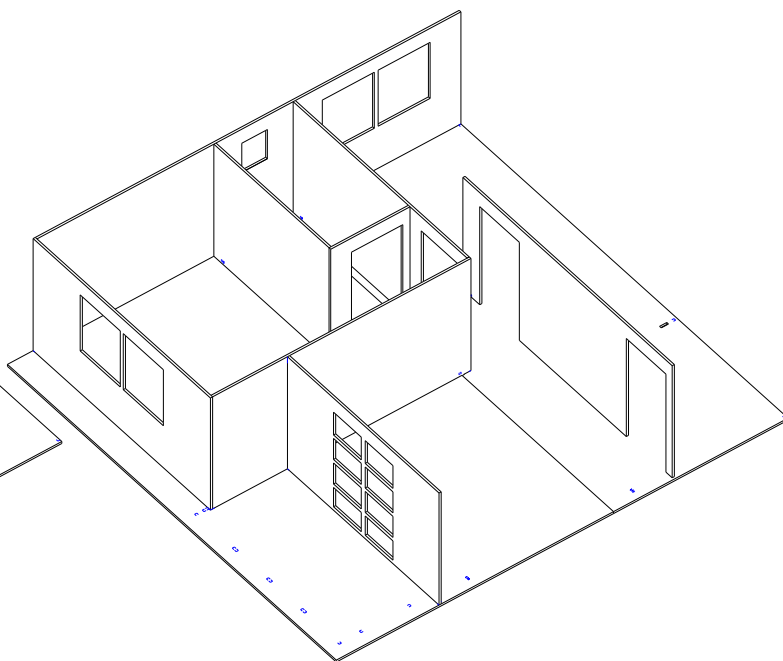
Passo 09

Colar a peça C8



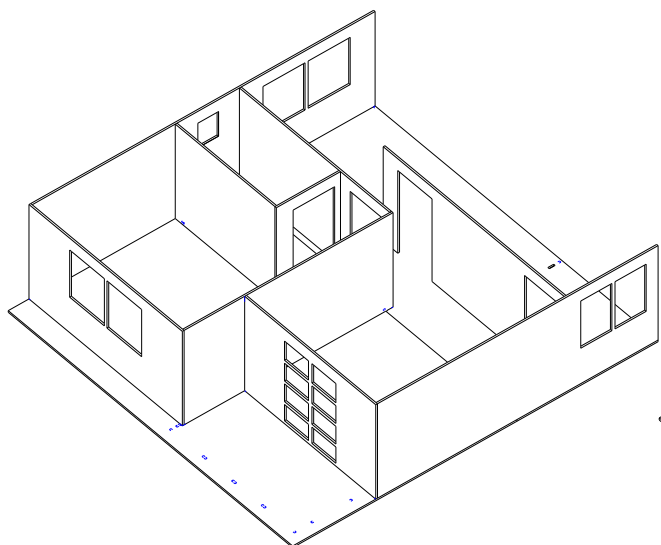
Passo 10

Cole a Janela Frontal



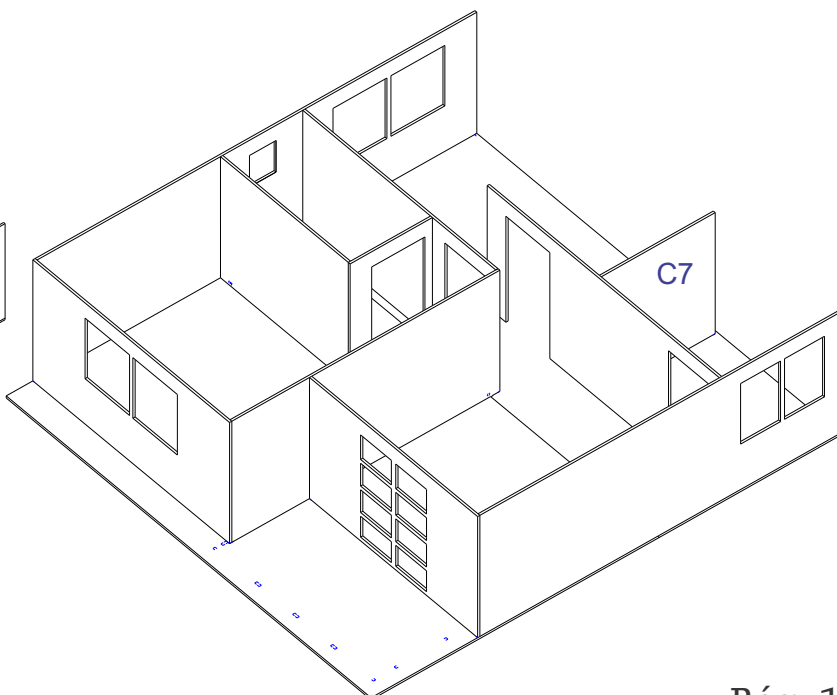
Passo 11

Colar a peça com janela lateral



Passo 12

Colar a peça C7

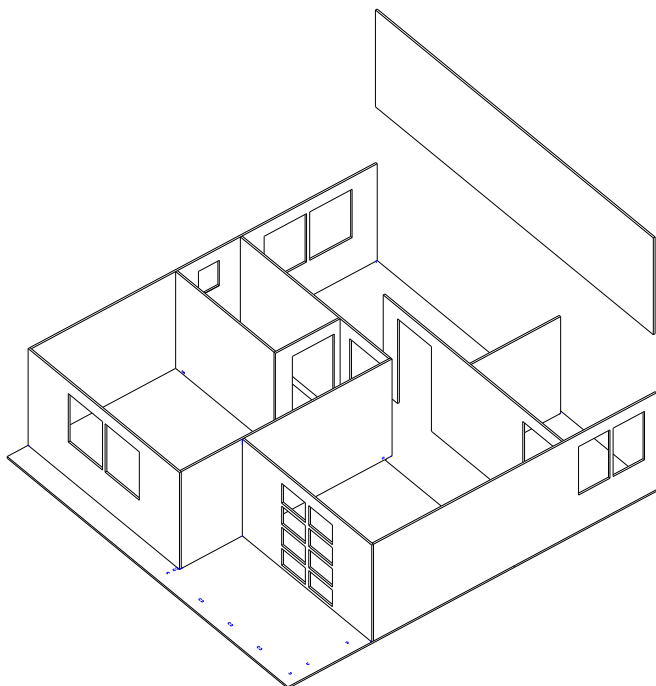




Andar Superior

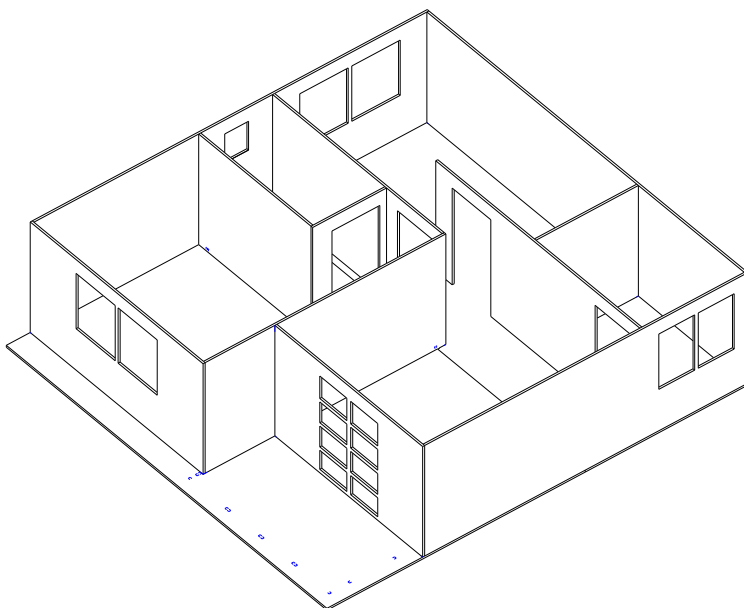
Passo 13A

Separar a peça dos fundos



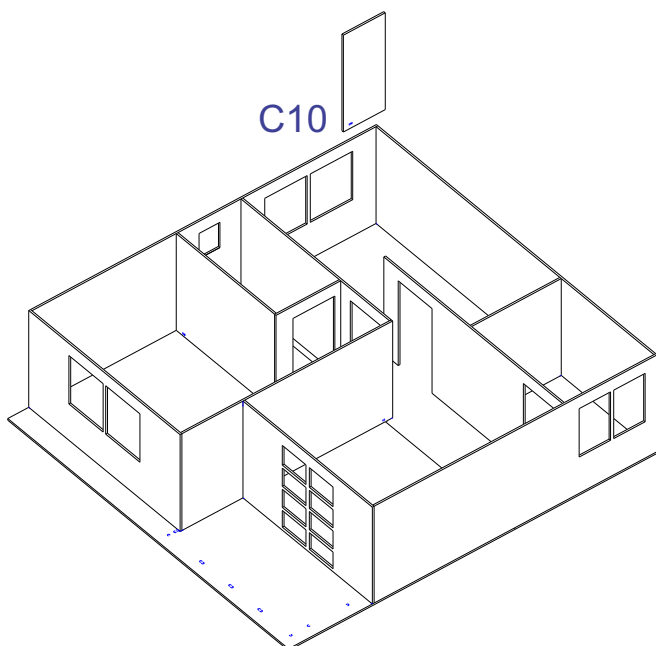
Passo 13B

Colar a parede dos fundos



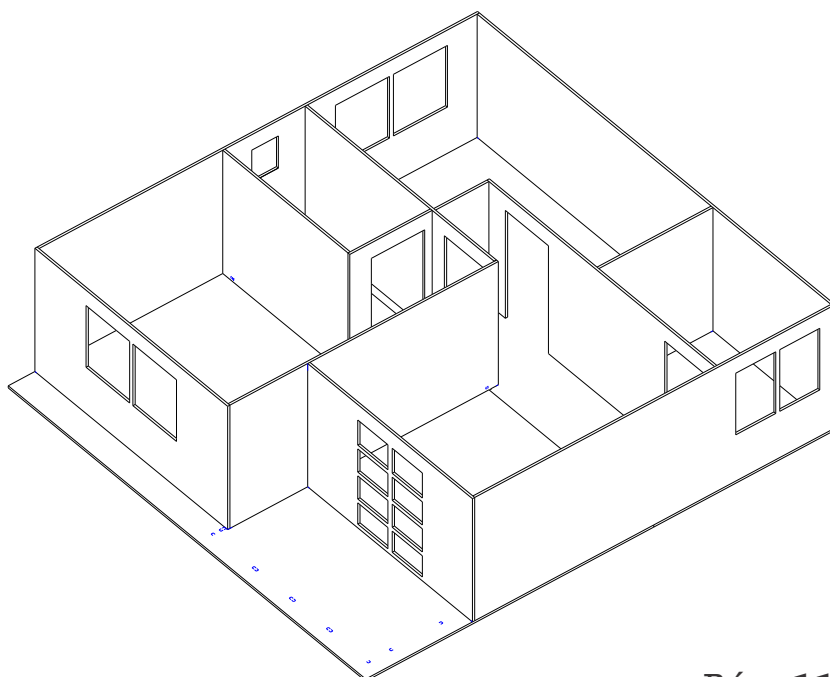
Passo 14A

Separe a peça C10



Passo 14B

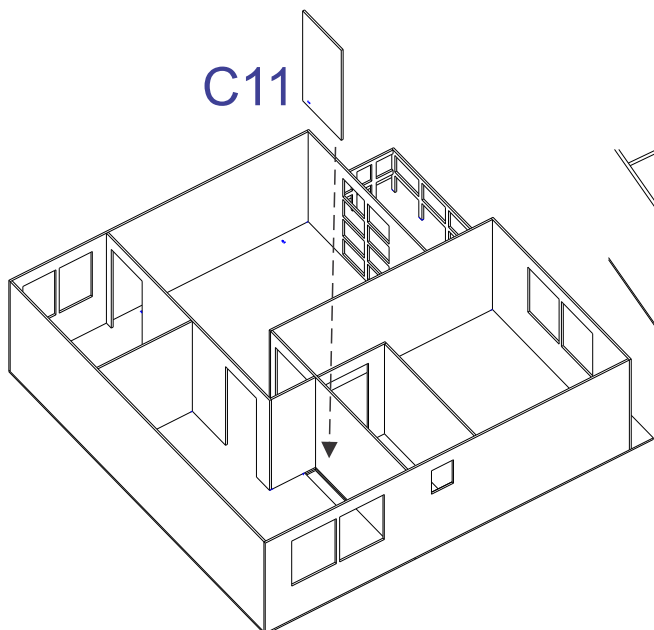
Colar a peça C10



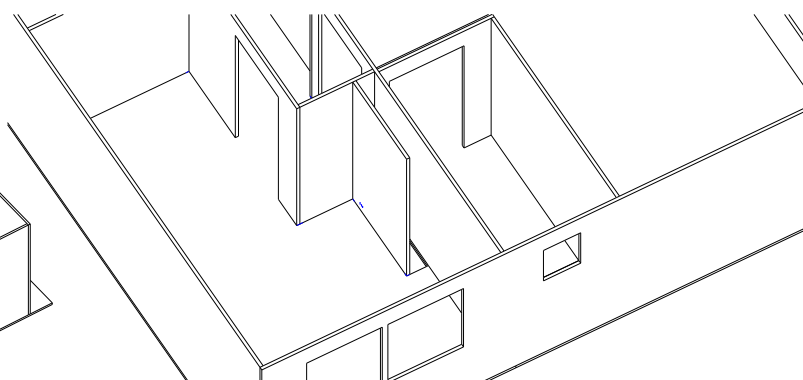


Andar Superior

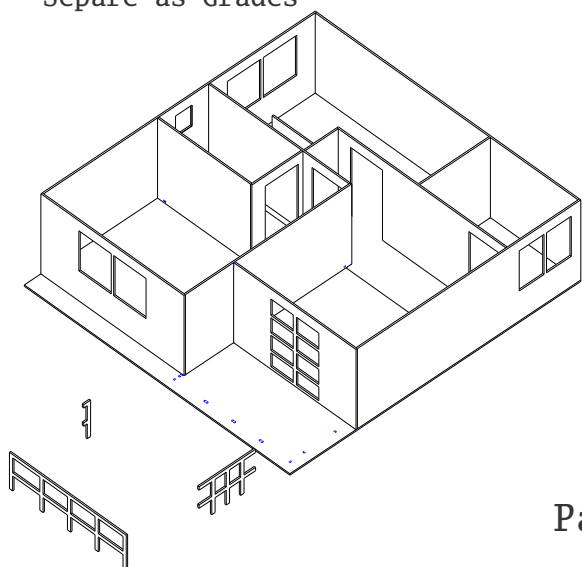
Passo 15A
Separar a peça C11



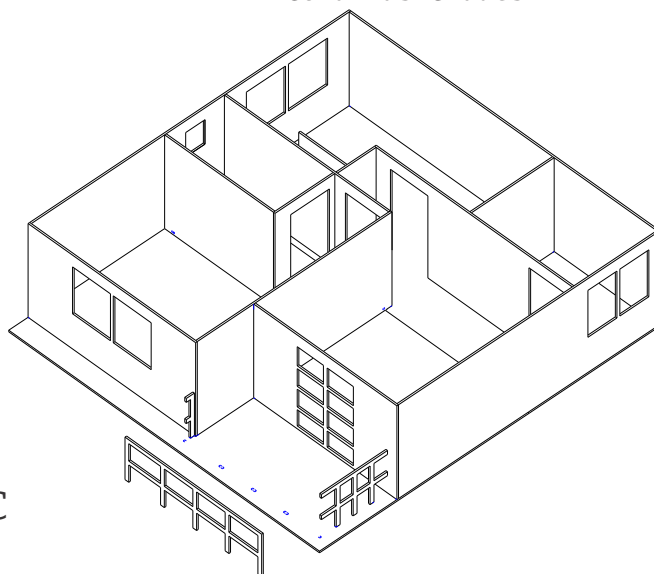
Passo 15B
Colar a peça C11



Passo 16A
Separe as Grades



Passo 16B
Colar as Grades



Passo 16C

