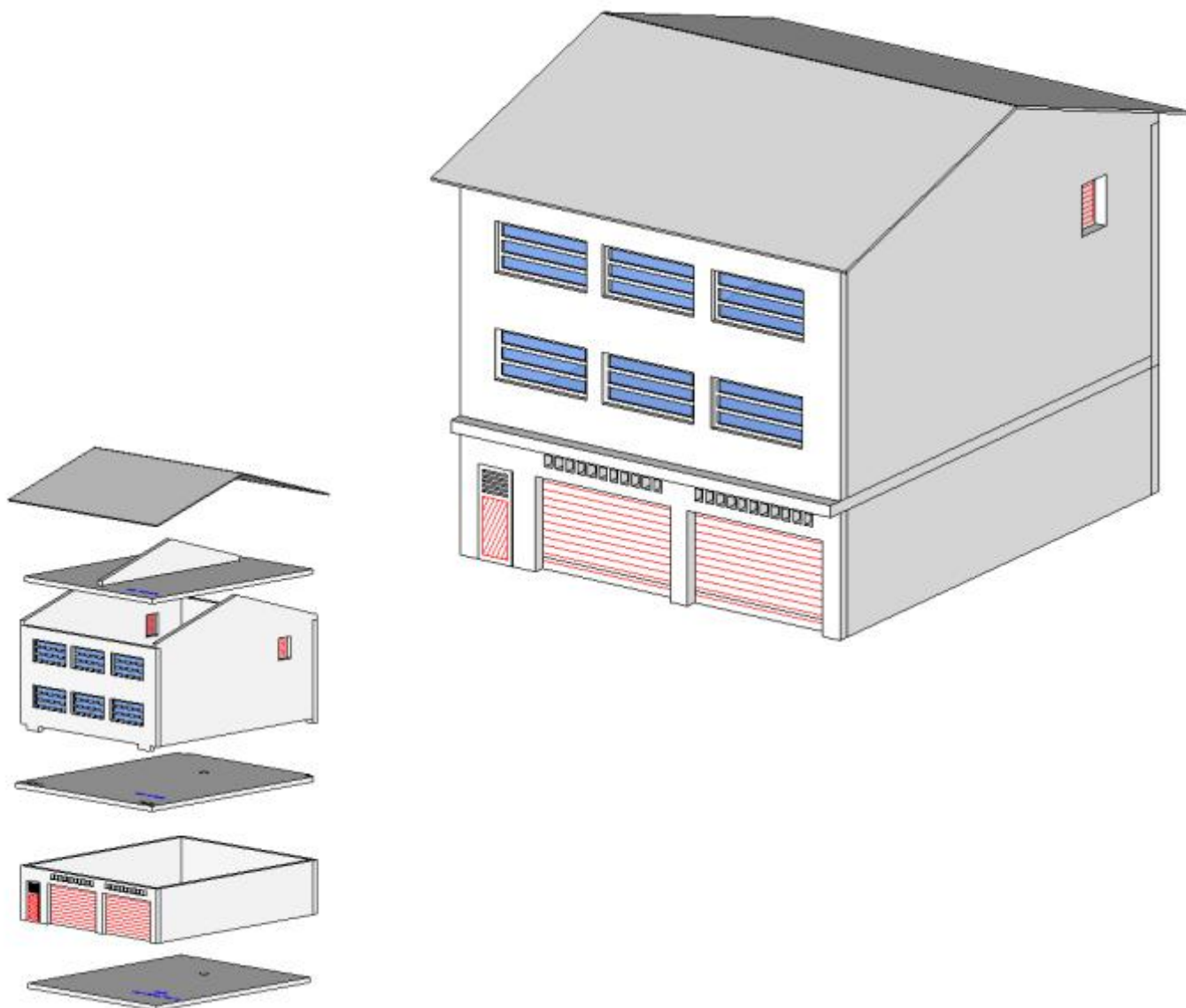




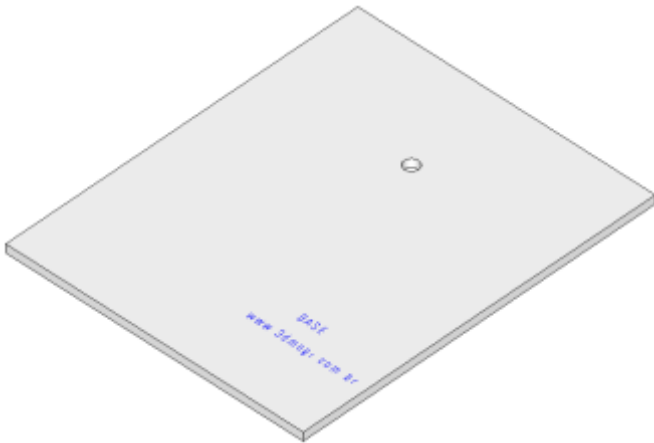
Manual de Montagem Comércio JP

Escala H0

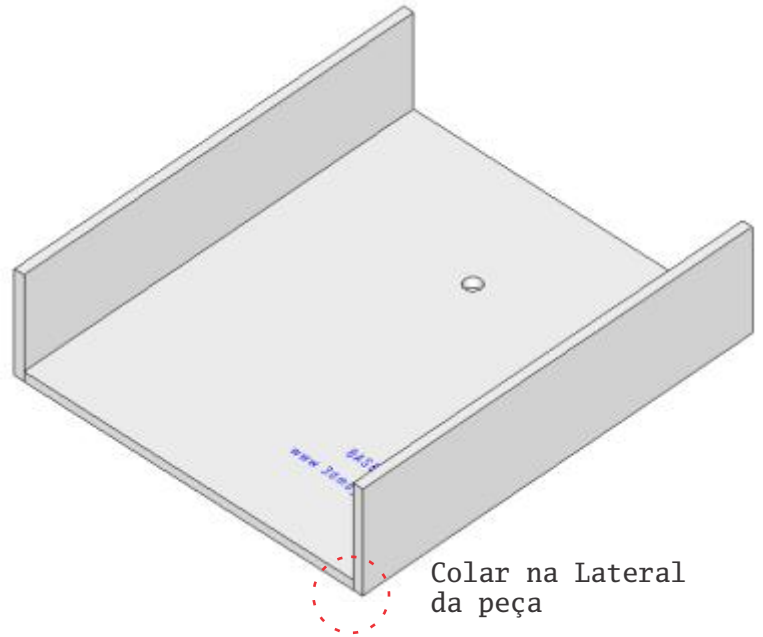




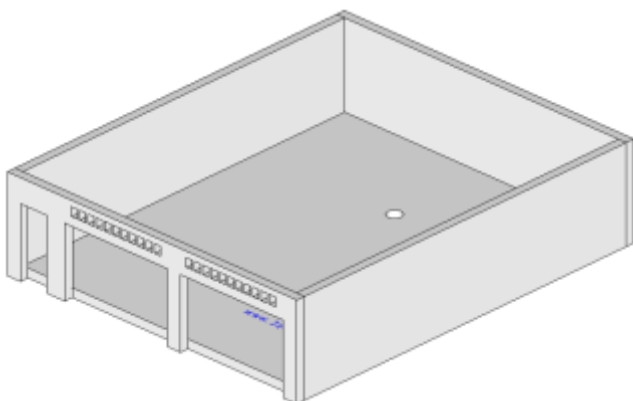
Passo 01



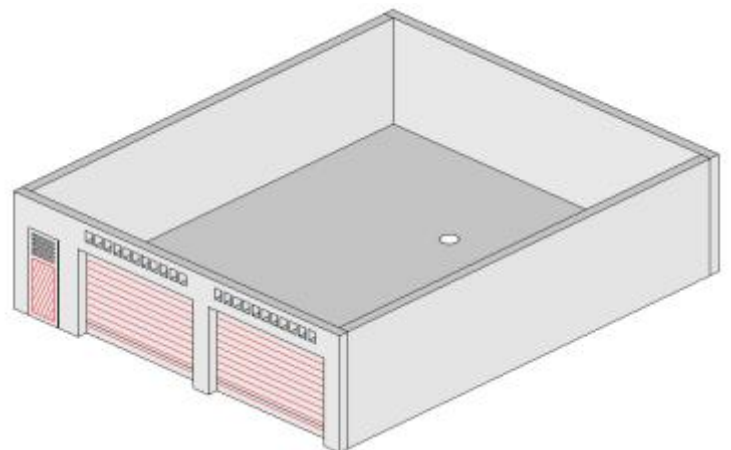
Passo 2



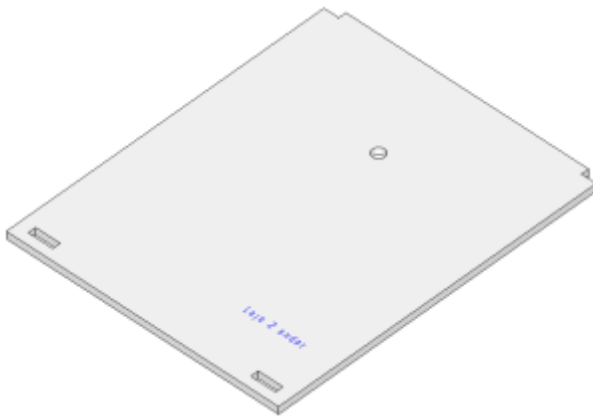
Passo 3



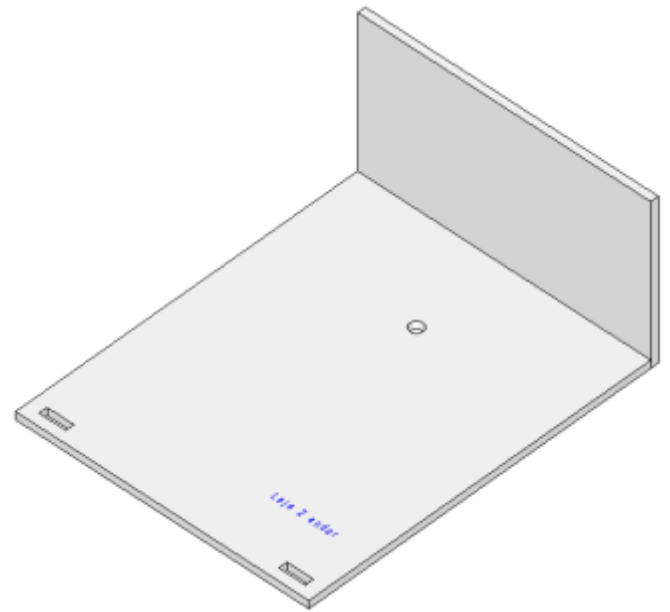
Passo 4



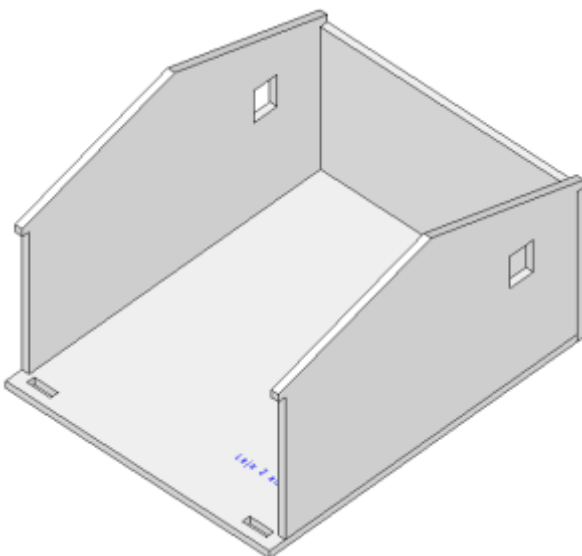
Passo 05
Piso Superior



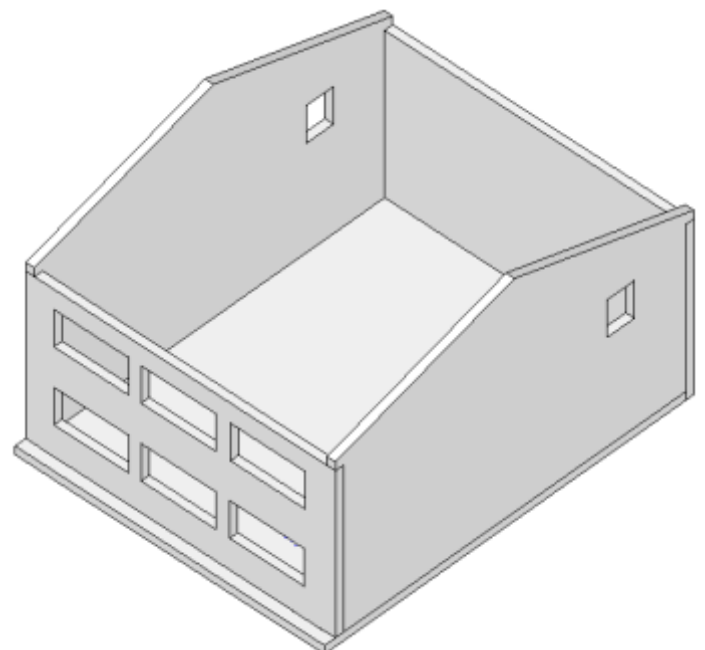
Passo 06



Passo 07



Passo 08

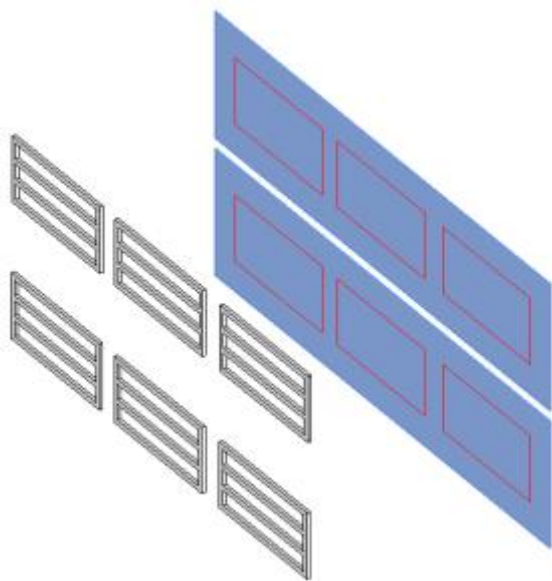




Passo 9A

Janelas (papel rígido)
Vidro (folha transparente)

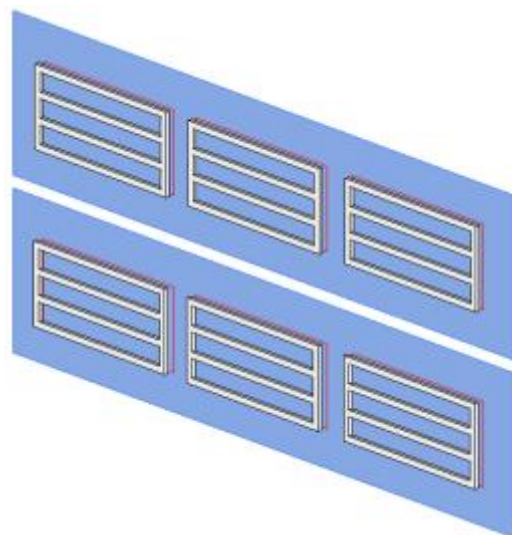
Usar cola Tek Bond
ou similar



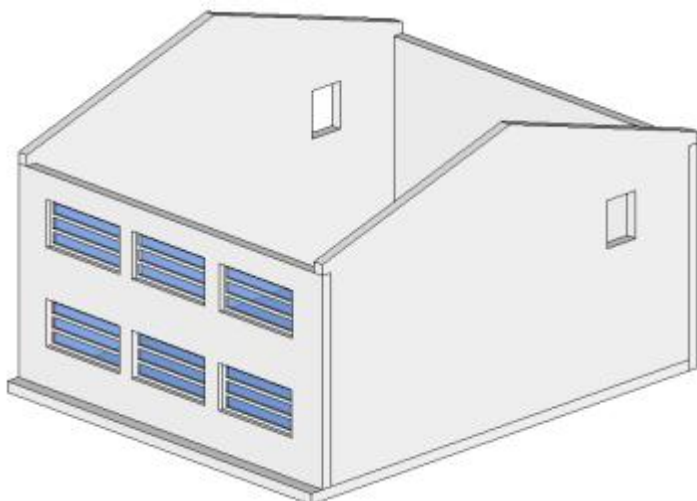
Passo 9B

Dica1: A janela poderá ser colada
na folha transparente, depois colar o conjunto
na parede de madeira.

Dica2: A janela poderá ser colada
primeiro na parede de madeira, e depois colar
a folha transparente.

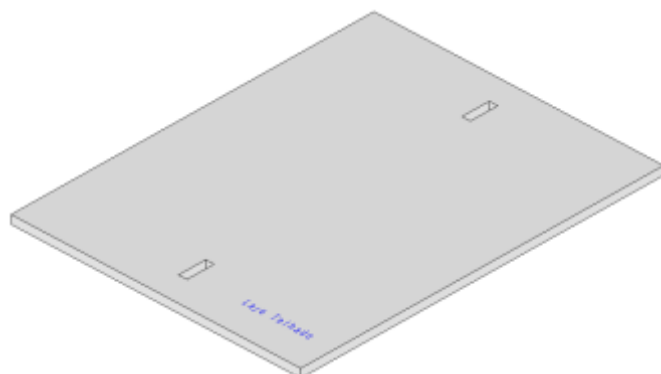


Passo 9C



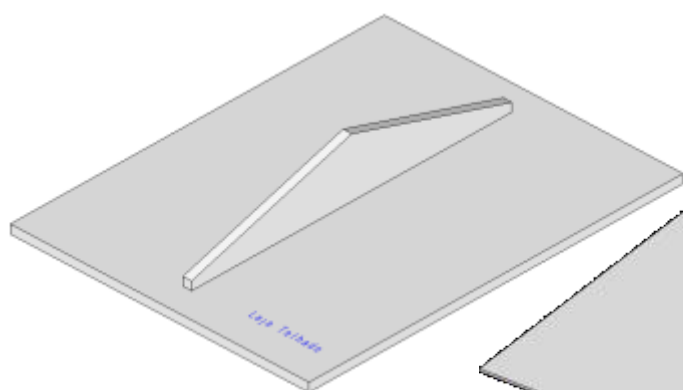
Passo 10

Laje do Telhado





Passo 11

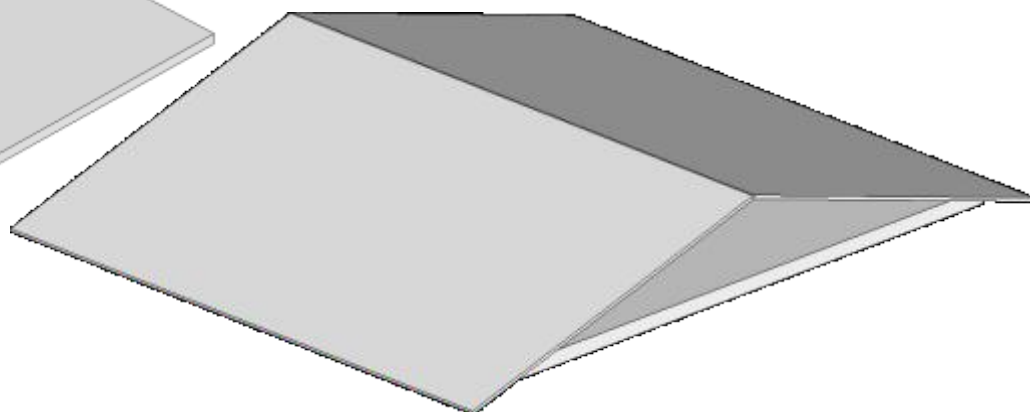


Passo 12

Telhado

Peça de Fórmica
0,7mm (espessura)

Colar com Tekbond
ou cola similar



Passo 13

