

KE Matrix Management Software

CCKM

- ATEN's KE Matrix Management Software provides IT administrators with tools to centralize the control and management of KE series devices in their IT environment. It allows easy administration of all KE series devices with a user-friendly, web-based GUI.

The KE Matrix Management Primary-Secondary architecture safeguards data transmissions through built-in redundancy factors, including automated database backup of primary and secondary servers and devices in addition to real-time database updating. Redundancy ensures that if any server hosting the KE Matrix Management Software goes down, the system will remain functioning, since a redundant secondary server maintains all the required services until the primary server comes back up.

Through ATEN's KE Matrix Management Software, the KE series devices provide advanced features for username and password authentication, user authorization and auto-detection of all devices – that can be switched and shared. With security transmissions in mind, the KE series devices implement AES encryption, while RADIUS, LDAP and AD ensure secure authentication.

IT administrators receive the following benefits implementing the KE Matrix Management Software:

- Advanced features for multi-displays, video grouping, fast switching, profile broadcasting, and media playback scheduling.
- Greater access with quick and easy control tools for configuration of KE devices.
- Secure and reliable access with AES encryption and server redundancy.

Note: KE series includes KE6900, KE6940, KE6900ST, KE8950, and KE8952.



Features

Management

- Centralized KE Matrix Management Software, allowing you to configure, administer, control, and maintain all KE series devices via an intuitive web based GUI
- One-to-one, one-to-many, many-to-one and many-to-many TX/RX connections
- Profiles save and reserve unlimited TX to RX device connections
- Channel connections allow RX devices to connect to multiple TX devices – to stream video, audio, USB and serial sources independently
- Configurable user and group permissions for access and control of KE devices
- Administrators can set access modes on TX devices for collaboration or to avoid interference among users
- Primary-Secondary architecture provides system redundancy
- Administrators easily view KE status and the latest system events in the GUI dashboard

Flexible and Efficient Operations

- Unlimited Video Walls – create multiple video walls with up to 8 x 8 (64 displays max) in each layout **NEW!**
- Advanced Scheduling – improves efficiency and saves costs by allowing media playback to be set based on time and date **NEW!**
- Video grouping of up to 4 sets of KE series devices to support Multi-Display applications
- Fast switching feature changes transmitter/receiver connections in under a second

Easy-to-Use Interface

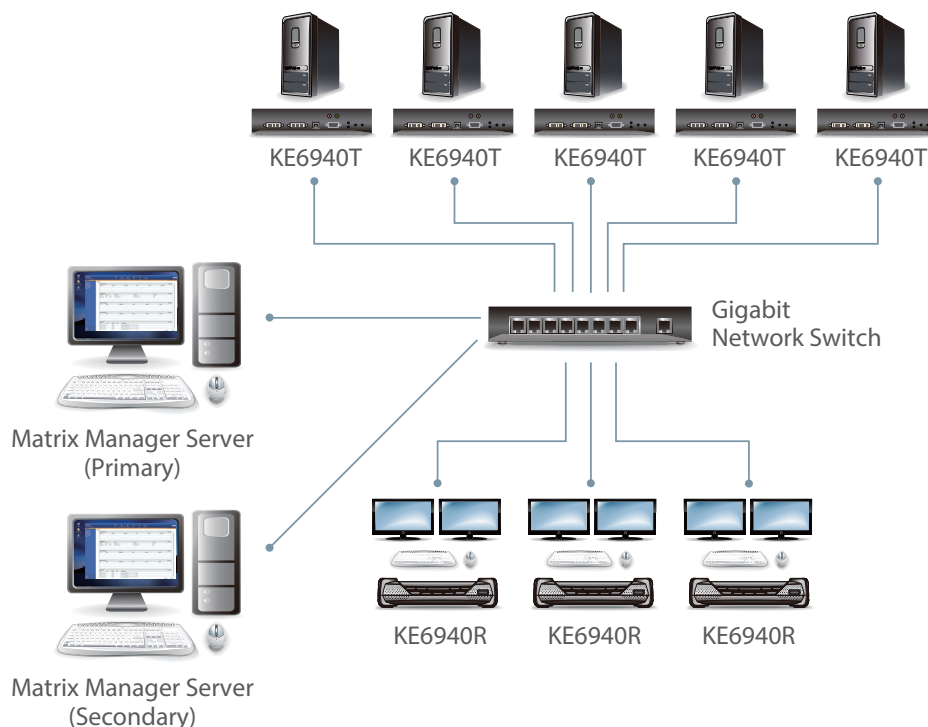
- Browser-based GUI offers a multi-language interface to minimize user training time and increase productivity
- Multi-browser support: Internet Explorer, Chrome, Firefox, Safari, Opera, Mozilla
- Filter and export function for system event logs
- Email notification of specified system event logs
- Multi-platform installation support: Windows, Linux
- Multi-platform client support: Windows, Mac OS X, Linux, Sun

Advanced Security

- User account authentication and management
- CCKM supports both internal and external authentication – external authentication supports LDAP, Active Directory, RADIUS and TACACS+
- Data transmission is secured by AES encryption

Highlights

| | |
|---|--|
| Easy to Use interface | <p>The KE Matrix Management Software offers a user-friendly, intuitive, browser-based GUI for simplified access to IT equipment in global data centers and remote offices. The browser-based GUI offers a multilingual interface to minimize user training time and increase productivity.</p> |
| Centralized Devices and User Permission Management | <p>The KE Matrix Management Software provides centralized management and configuration of remotely distributed KE series devices. It also integrates user accounts with AD, LDAP, TACACS+ and RADIUS servers for improved authentication and authorization.</p> |
| Primary-Secondary Architecture | <p>The KE Matrix Management Software uses a Primary-Secondary architecture to offer service redundancy with real-time database updating. Once enabled, a Secondary server can automatically substitute for the Primary if the latter fails. Redundancy also means that its function and information are not lost – a redundant Secondary unit can provide the required management services until the offline unit comes back up.</p> |
| Logging, Audits and Alerts | <p>The KE Matrix Management Software offers flexible logging and reporting options with audit trails for diagnostics and troubleshooting. Powerful search functions and extensive sorting and filtering of log categories that quickly pinpoint the events you are searching for are also provided. Complete logs, as well as log search results, can be exported for audit and analysis.</p> |
| Multi-Display | <p>The KE Matrix Management Software can video group of up to 4 sets of KE series devices to support up to 8 display monitors for each server.</p> |



Matrix Manager vs. Matrix Manager Lite Comparison

| Function | Matrix Manager | Matrix Manager Lite* |
|--------------------------|----------------|----------------------|
| Device Licenses | Unlimited | 8 (Sum of TX and RX) |
| User Management | Yes | Yes |
| Permission Configuration | Yes | Yes |
| Downloadable Software | No (CD-ROM) | Yes (ATEN Website) |
| USB License Key | Yes | No |
| Redundancy | Yes | Yes |
| Multi-Display | Yes | Yes |

Note: *Download Matrix Manager Lite from the ATEN eService website.

USB License Key Specifications

| Function | | CCKM USB License Key |
|---------------------|------------------------|----------------------------|
| Environment | Operating Temp. | 0° to 40° C |
| | Storage Temp. | -20° to 60° C |
| | Humidity | 0 - 80% RH, Non-condensing |
| Physical Properties | Housing | Metal & Plastic |
| | Weight | 0.01 kg |
| | Dimensions (L x W x H) | 8.36 x 2.78 x 1.37 cm |

ATEN International Co., Ltd.

3F., No.125, Sec. 2, Datong Rd., Sijhih District., New Taipei City 221, Taiwan

Phone: 886-2-8692-6789 Fax: 886-2-8692-6767

www.aten.com E-mail: marketing@aten.com

Publish Date: 08/2018 V4.0



© Copyright 2018 ATEN® International Co., Ltd.
 ATEN and the ATEN logo are trademarks of ATEN International Co., Ltd.
 All rights reserved. All other trademarks are the property of their respective owners.