



10W Animation Laser Light Manual



Product model: TX RGB10000
 Product Name: 10W Full Color Laser Projector
 Rated voltage: AC100V~230V 50~60Hz \pm 10%
 Laser source: diode pumped laser
 Laser modulation: TTL or analog modulation
 Laser wavelengths: 525 nanometers, 638 nanometers, and 450 nanometers
 Laser power: 10W (red 3W, green 3W, blue 4W)
 Laser color: Full color
 Laser system: High speed ammeter scanning system DT25
 Laser effects: full-color laser lines, 3D line effects, computer software control, sound and light synchronization (laser software control), computer animation, text, lines
 Control mode: DMX512, master-slave effect.
 DMX channel: 16/36 dedicated mobile head laser projector program
 Environment: Indoor
 Laser range: about 40 meters
 Applicable places: large bars, performances, water curtain laser shows, light shows, scenic area laser lighting
 Working temperature: -20 ° C~45 ° C

一、LCD The display panel is shown in the following figure:



1、LED Status Description。

Laser Key	RG:Slow	
SafetyProtected	R: ON	G:OFF
DMX And Slave Mode	R:OFF	G:Fast
Auto Mode	R: OFF	G:Slow
Music Mode,	R: OFF	G:ON
ILDA Mode	R: OFF	G:Fast

2、SelectMenu。

Select the desired function menu by rotating left and right. When the menu height is selected, press OK/Return to select the function。

二、LCD The functions of the Chinese and English menus are shown in the table below:

Operation function	Submenu	Menu Parameters	Description
DMXControl	DMX Setup	DMX+Slave	DMX512 mode and slavemode when the master and slave are connected, the slave must be set to DMX+slave
		DMX512	DMX512 mode
	Channel	16CH	Std mode
		36CH	Pro mode
	Address	1	Set the address code of the light
	DmxSignal	Disconnect	No DMX signal received
		Connect	DMX signal reception is normal
	StateInfo	Laser ON Laser OFF	Display the working status of the light
QuickPlay	Trigger	Auto	Auto mode
		Music	Music mode
	Playing	Show:All	Choose to play the show, All is all programs
	PlayList	List: All	Select Playlist, All is all list
		SizeX:100	Choose the horizontal size
		SizeY:100	Choose the vertical size
		Bright:255	Choose the overall brightness
	PlaySpeed	AutoSpeed 50	Choose Auto speed from 0 to 100
		Sensitivity 80	Select voice sensitivity from 0 to 100
	StateInfo	Laser ON Laser OFF	Display the working status of the light
ILDA-Mode	ILDASetup	ILDA-DB25	Select DB25 signal input, automatically recognize ILDA line
		ILDA-NET	Select the RJ45 signal input ILDA
	Invert X	OFF ON	ILDA control selects X forward and backward directions
	Invert Y	OFF ON	ILDA control selects Y forward and backward directions
	Signal	Disconnect	The ILDA line is not connected
		Connect	ILDA line connection is normal
	StateInfo	Laser ON	Display the working status of

		Laser OFF	the light
LaserSetup	ScanRate	30KPPS	Set the scanning speed
		Pattern:1	Select test pattern
	Color	RGB	Set the color of the light
		Rmax:255	Set the red brightness
		Gmax:255	Set the green brightness
		Bmax:255	Set the blue brightness
	XY-Invert	Invert-X:Yes No	Set Built in pattern X inversion
		Invert-Y:Yes No	Set Built in pattern Y inversion
		SwapXY:Yes No	Set Built in pattern XY swap
		<<<	Go back
	XY-Size	X: 100	Set X size
		Y: 100	Set Y size
Settings	Safety	OFF	Set safety to off, laser single point light output
		ON	Set safety on, laser single point off light
	Master	OFF	Set the Master to off, unable to control master-slave online connection
		ON	Set Master on, master-slave online control
	LaserType	Anglog	Set up analog modulation laser
		TTL	Set TTL modulation laser
	DMX-Trig	TriggerRun	Automatically run dmx512 Mode upon receiving DMX signal
		ManualRun	Manually select DMX512 mode, the Master must be set to manual operation when master-slave is connected
	Oper.Temp	OFF	Turn off the laser temperature detection function
		ON	Turn on the laser temperature detection function
SystemSet	Language	English	Set the menu interface to English
		Chinese	Set the menu interface to Chinese

	Backlight	LCD ON	LCD backlight is always on
		15S LCD OFF	LCD backlight turned off for 15 seconds
		15S LCD Lock	LCD backlight turned off for 15 seconds, also screen locked
	Display	Normal	Set menu interface to display normally
		180deg	Rotate the menu interface 180 degrees to display
	App Skin	1 到 4	Set the skin style of the menu interface
	Default	111	Press confirm to restore factory settings when selecting 222
SystemInfo	Version	Thread3.13	System information
	Hardware	C100MV1.8	Hardware information
	App Name	YM01V1.56G	software information
	Firmware	2024012201	Firmware information
	UpdateApp	CheckVer	Upgrade function retention

三、DMX-512 Channel description:

1、STD mode: 16CH

Channel		Channel value	Control instructions
CH1	Switching lights	0	Turn off the lights
		1~255	Turn on the lights 1-100% brightness selection
CH2	Auto effect speed selection	0~26	Default Auto speed
		27~127	The overall speed of the Auto effect changes from slow to fast. Note that static patterns require a variation effect to see the speed adjustment effect
	Sensitivity selection for voice control	128~255	Select voice sensitivity
CH3	Pattern group	0~127	Select a pattern group for every 16 values
	Effects Group	128~255	Select an effect group for every 16 values
CH4	Pattern selection	0~255	Choose a pattern for every 5 values
	Effect selection	0~1	Play all selected effect groups
		2~255	Choose an effect for every 2 values

CH5	colour	0~3	Original color
		4~31	Fixed color selection, choose one every 4 values
		32~35	Colorful color changing effect
		36~39	Red, green, and blue color changing effect
		40~43	Original color change effect
		44~239	Multiple flow effects, choose one every 4 values
		240~255	Gradual drawing effect
CH6	Color speed	0~3	Color speed off
		4~127	Color speed changes from slow to fast, positive phase
		128~255	Color speed changes from slow to fast, reversed
CH7	Pattern line	0~63	Highlight line scanning speed selection
		64~127	Line scanning speed selection
	Pattern Points	128~255	Point scanning speed selection
CH8	Pattern Size	0~255	Pattern selection from large to small
CH9	Rotate Z	1~127	Rotation Z angle selection
		128~255	Rotation Z speed selection
CH10	Rotate X	1~127	Rotation X angle selection
		128~255	Rotation X speed selection
CH11	Rotate Y	1~127	Rotation Y angle selection
		128~255	Rotation Y speed selection
CH12	horizontal movement	1~127	Horizontal movement position selection
		128~255	Horizontal movement speed selection
CH13	vertical movement	1~127	Vertical movement position selection
		128~255	Vertical movement speed selection
CH14	Zoom	1~127	Scaling size selection
		128~255	Zoom speed selection
CH15	Gradual drawing	1~255	Gradual drawing speed selection
CH16	X waves	1~127	X Wave Speed Selection
	Y waves	128~255	Y Wave Speed Selection

2、PRO Mode: 36CH

Channel		Channel value	Control instructions
CH1	Switching lights	0	Turn off the lights
		1~255	Turn on the lights 1-100% brightness selection
CH2	Auto effect speed selection	0~26	Default Auto speed
		27~127	The overall speed of the Auto effect changes from slow to fast. Note that static patterns require a variation effect to see the speed adjustment effect
	Sensitivity selection for voice control	128~255	Select voice sensitivity

CH3	Pattern group	0 ~ 127	Select a pattern group for every 16 values
	Effects Group	128 ~ 255	Select an effect group for every 16 values
CH4	Pattern selection	0 ~ 255	Choose a pattern for every 5 values
	Effect selection	0 ~ 1	Play all selected effect groups
		2 ~ 255	Choose an effect for every 2 values
CH5	Pattern Size	0 ~ 255	Pattern selection from large to small
CH6	Horizontal Position MSB	0 ~ 255	Horizontal position MSB selection, with a value of 128 indicating the middle position and closed light outside the boundary
CH7	Vertical Position MSB	0 ~ 255	Vertical position MSB selection, with a value of 128 indicating the middle position and closed light outside the boundary
CH8	colour	0~3	Original color
		4~31	Fixed color selection, choose one every 4 values
		32 ~ 35	Colorful color changing effect
		36 ~ 39	Red, green, and blue color changing effect
		40 ~ 43	Original color change effect
		44 ~ 239	Multiple flow effects, choose one every 4 values
		240 ~ 255	Gradual drawing effect
CH9	Color speed	0~3	Color speed off
		4~127	Color speed changes from slow to fast, positive phase
		128~255	Color speed changes from slow to fast, reversed
CH10	Pattern line	0 ~ 63	Highlight line scanning speed selection
		64 ~ 127	Line scanning speed selection
	Pattern Points	128 ~ 255	Point scanning speed selection
CH11	strobe	1 ~ 255	Strobe speed selection
CH12	Rotate Z	1 ~ 127	Rotation Z angle selection
		128 ~ 255	Rotation Z speed selection
CH13	Rotate X	1 ~ 127	Rotation X angle selection
		128 ~ 255	Rotation X speed selection
CH14	Rotate Y	1 ~ 127	Rotation Y angle selection
		128 ~ 255	Rotation Y speed selection
CH15	horizontal movement	1 ~ 127	Horizontal movement position selection
		128 ~ 255	Horizontal movement speed selection
CH16	vertical movement	1 ~ 127	Vertical movement position selection
		128 ~ 255	Vertical movement speed selection
CH17	Zoom	1 ~ 127	Scaling size selection
		128 ~ 255	Zoom speed selection
CH18	Gradual drawing	1 ~ 255	Gradual drawing speed selection
CH19	X waves	1 ~ 127	X Wave Speed Selection
	Y waves	128 ~ 255	Y Wave Speed Selection
CH20	Pattern group	0 ~ 255	Select a pattern group for every 16 values
CH21	pattern	0 ~ 255	Choose a pattern for every 5 values

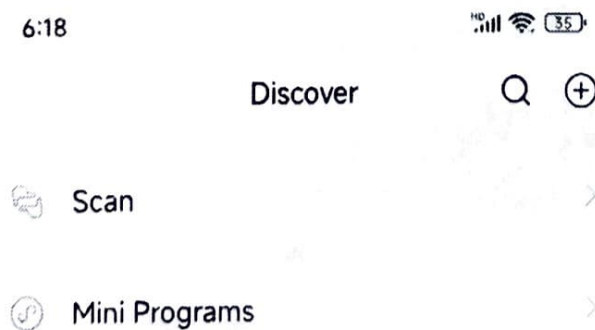
CH22	Pattern Size	0~255	Pattern selection from large to small
CH23	Horizontal Position MSB	0~255	Horizontal position MSB selection, with a value of 128 indicating the middle position and closed light outside the boundary
CH24	Vertical Position MSB	0~255	Vertical position MSB selection, with a value of 128 indicating the middle position and closed light outside the boundary
CH25	colour	0~3	Original color
		4~31	Fixed color selection, choose one every 4 values
		32~35	Colorful color changing effect
		36~39	Red, green, and blue color changing effect
		40~43	Original color change effect
		44~239	Multiple flow effects, choose one every 4 values
		240~255	Gradual drawing effect
CH26	Color speed	0~3	Color speed off
		4~127	Color speed changes from slow to fast, positive phase
		128~255	Color speed changes from slow to fast, reversed
CH27	Pattern line	0~63	Highlight line scanning speed selection
		64~127	Line scanning speed selection
	Pattern Points	128~255	Point scanning speed selection
CH28	strobe	1~255	Strobe speed selection
CH29	Rotate Z	1~127	Rotation Z angle selection
		128~255	Rotation Z speed selection
CH30	Rotate X	1~127	Rotation X angle selection
		128~255	Rotation X speed selection
CH31	Rotate Y	1~127	Rotation Y angle selection
		128~255	Rotation Y speed selection
CH32	horizontal movement	1~127	Horizontal movement position selection
		128~255	Horizontal movement speed selection
CH33	vertical movement	1~127	Vertical movement position selection
		128~255	Vertical movement speed selection
CH34	Zoom	1~127	Scaling size selection
		128~255	Zoom speed selection
CH35	Gradual drawing	1~255	Gradual drawing speed selection
CH36	X waves	1~127	X Wave Speed Selection
	Y waves	128~255	Y Wave Speed Selection

ONE、Mini Program User Guide

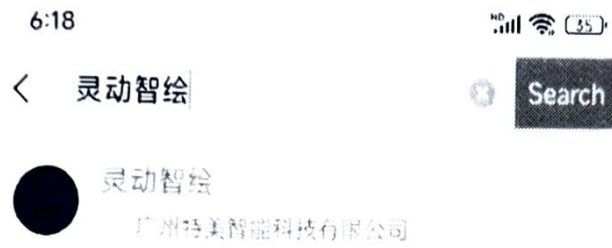
Method 1: Open WeChat and scan the QR code to experience it



Method 2: Open WeChat and search for "Dynamic Smart Painting" experience
Click the 'Discover' button on the bottom navigation bar to find the 'Mini Program' entrance

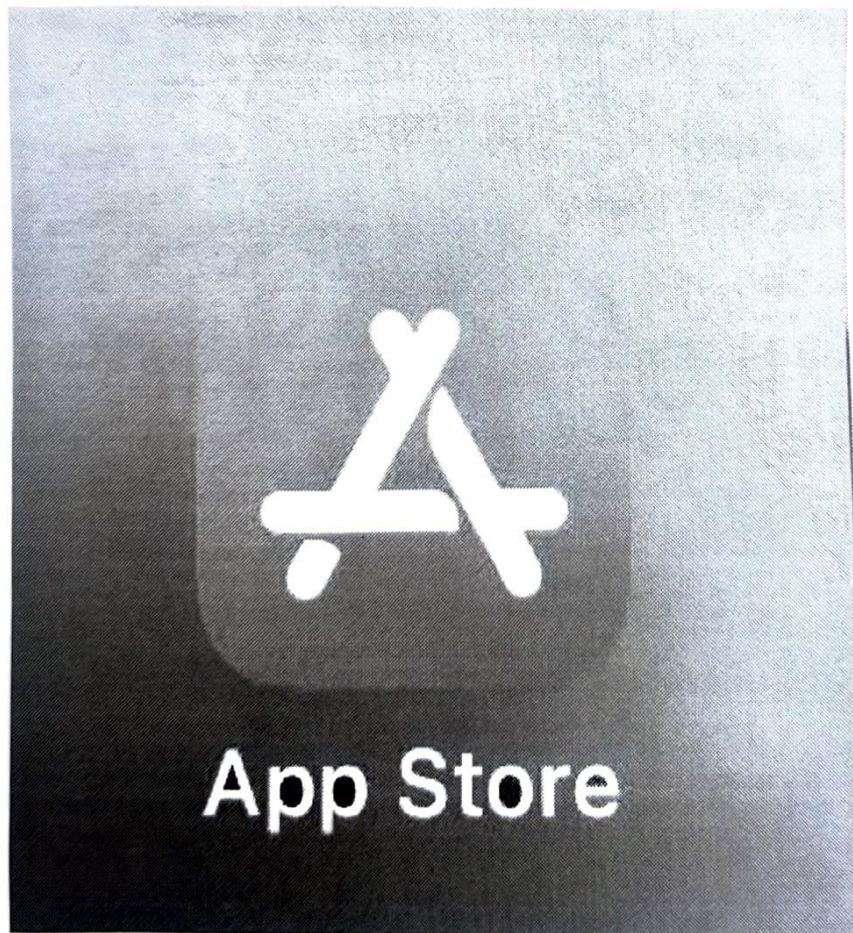


Enter the name of the mini program in the search box: 灵动智绘



TWO、Apple (iOS) installation tutorial

Find the App Store app on your iPhone/iPad and open the search for "Lovely draw"



Enter "Lovely draw" to search, click the "Get" button to download and install, as shown in the following picture

16:05

96

lovely draw

取消



Lovely Draw

灵动智绘



★★★★★ 1

Guangzhou Temei Intelligen...

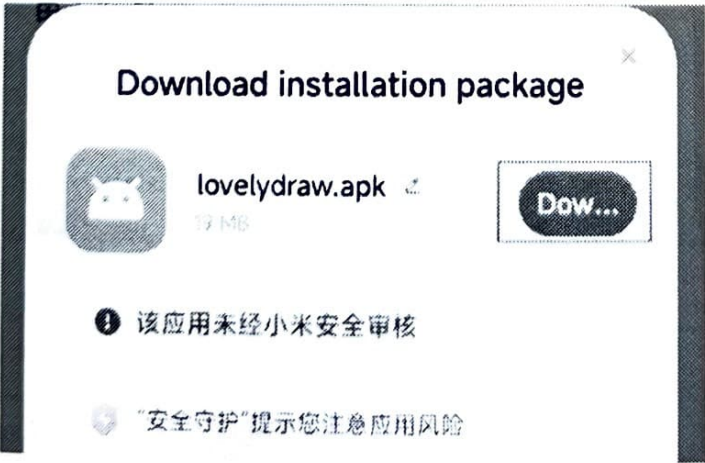


THREE、Android installation tutorial

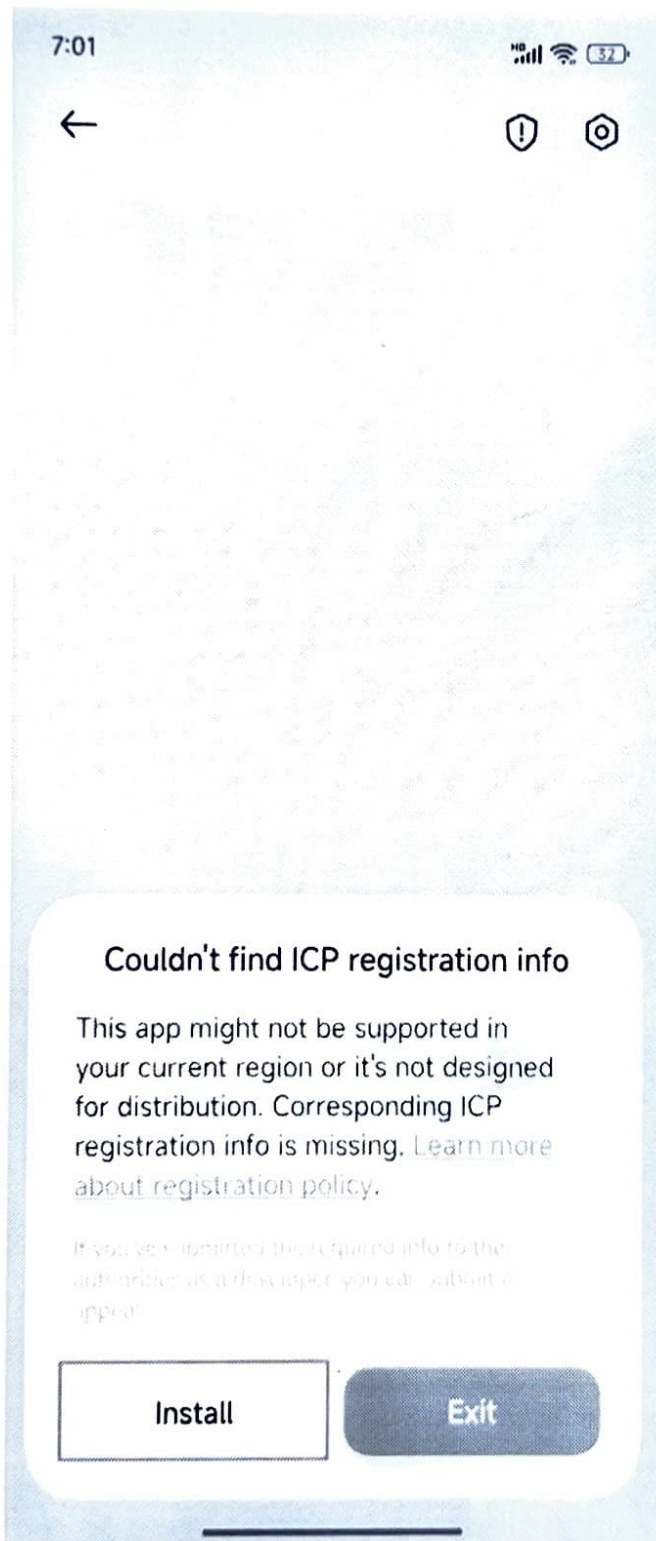
Scan the QR code with a mobile browser to download and install



After scanning the code with a mobile browser, click on download and installation, as shown in the following picture



Click to continue installation, as shown below



Continue installation, as shown below

7:04

Signal, Wi-Fi, and battery icons



Lovely Draw

Version: 2.0.2

Source: Browser

该应用未经小米安全审核，建议优先
使用应用商店查找类似应用

已了解此应用未经安全检测

查找类似应用

Install

Cancel

Huawei installation, if unable to install, please click to learn about pure mode (see next step for details), as shown below

16:59



灵动智绘

安装来源：浏览器



应用备案状态未知

未查询到此应用的 ICP 备案信息，此应用可能未履行 ICP 备案手续，或为单机应用、境外应用等。
如您是开发者，已完成应用备案，可前往申诉。

了解纯净模式

将申请以下权限



媒体和文件



电话



相机



位置信息

已了解此应用未经检测，可能存在风险，您可以设置是否移入“应用管控中心”。

查找类似应用

继续安装

取消

Huawei phones need to turn off enhanced protection, enter system settings, click on pure mode, as shown in the following picture

17:01

🔒 🔍 📶 📶 📶 (29)

← 系统和更新

软件更新 >

系统导航方式 >

语言和输入法 >

日期和时间 >

手机克隆 >

备份和恢复 >

重置 >

纯净模式 >

简易模式 >

开发人员选项 >

用户体验改进计划 >

认证标志 >

Enter pure mode and turn off enhanced protection, as shown below

17:01

🔒 📶 📶 📶 📶 (29)

← 纯净模式



纯净模式持续保护中

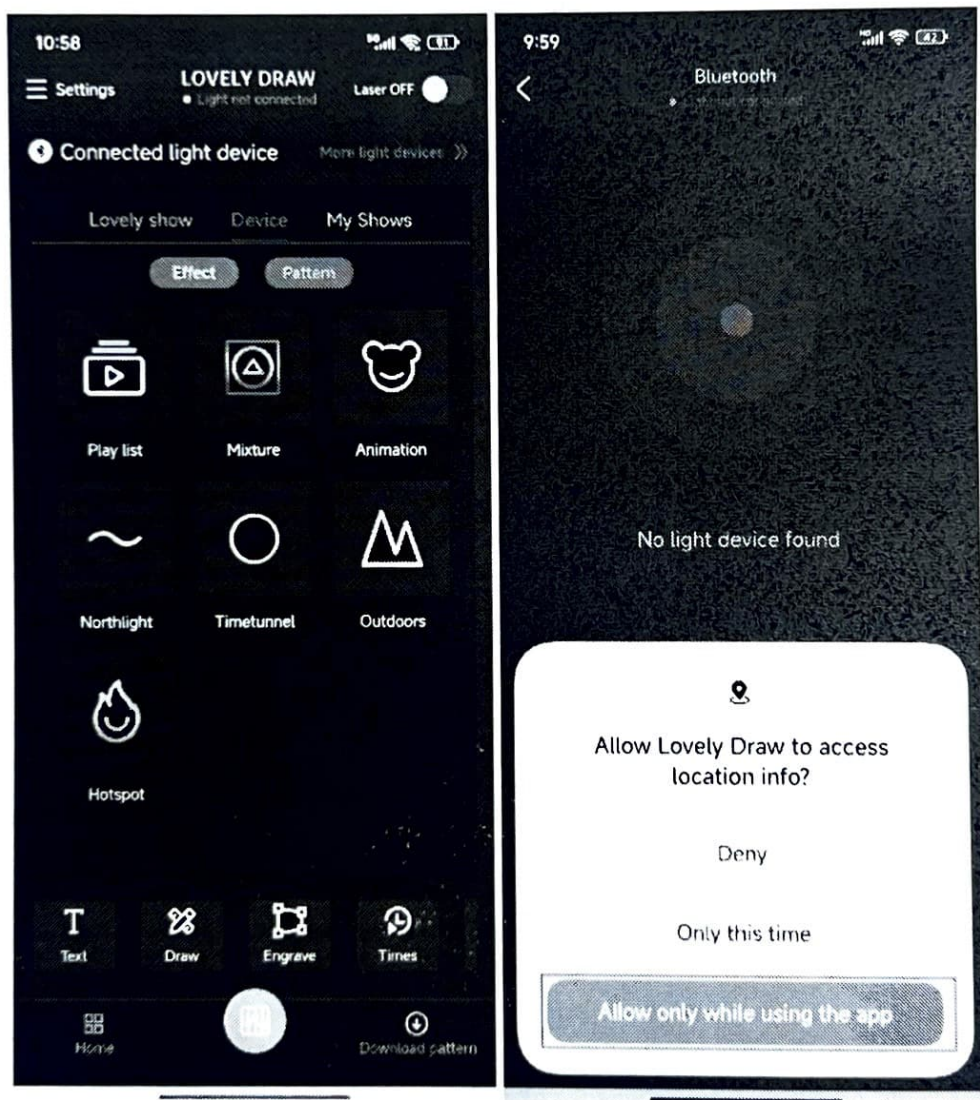
为提供更安全的服务以保护您的权益，建议优先安装经过华为应用市场检测的应用。了解纯净模式

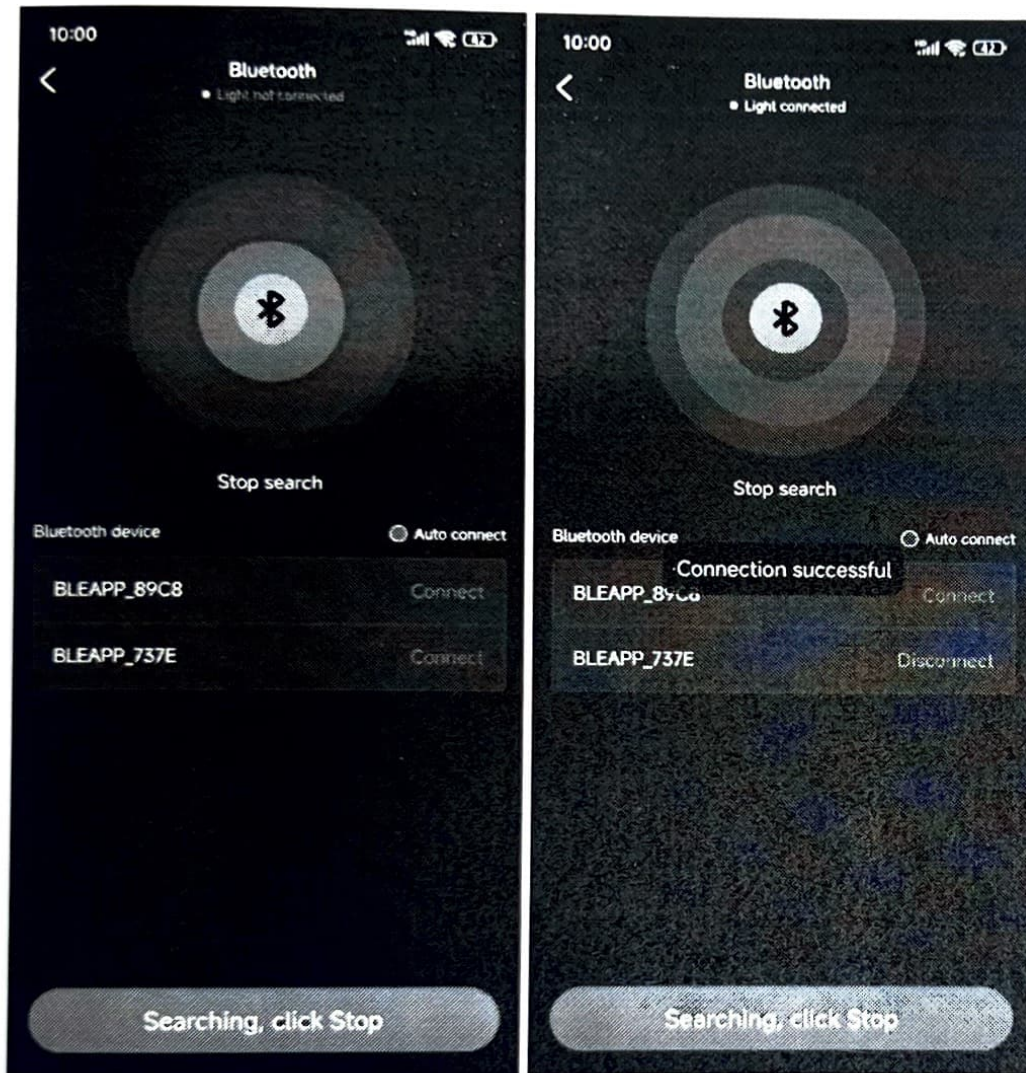
增强防护 ⓘ



ONE、Lamp equipment connection

Open the app to enter the homepage, click on the connection light device, and for the first use, allow the Lingdong Zhihui app to authorize the acquisition of location information. Select "Allow only during use"; Wait for the app to search for the light device name BLEAPP_XXXX, click connect, and wait for the connection to succeed. The steps are shown in the following figure:



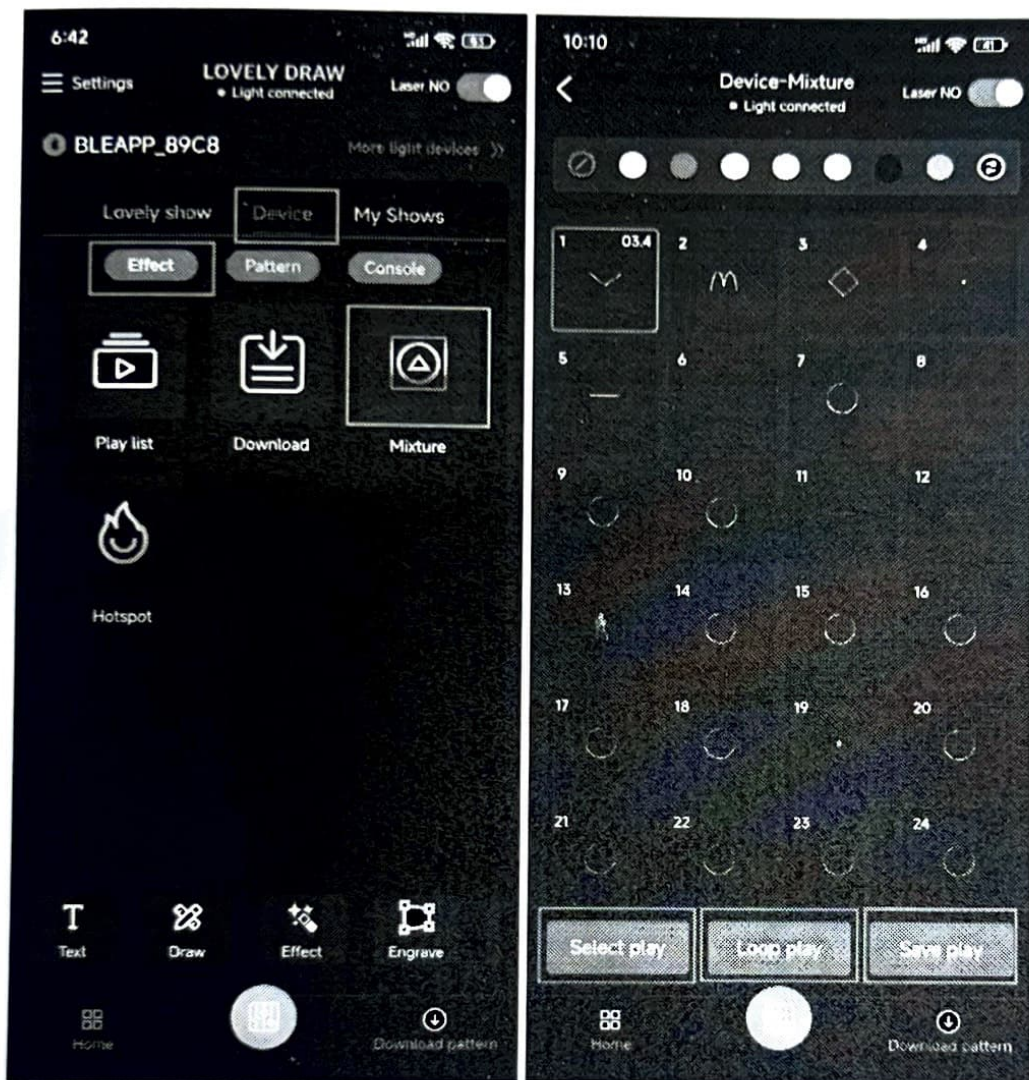


TWO. Core functions

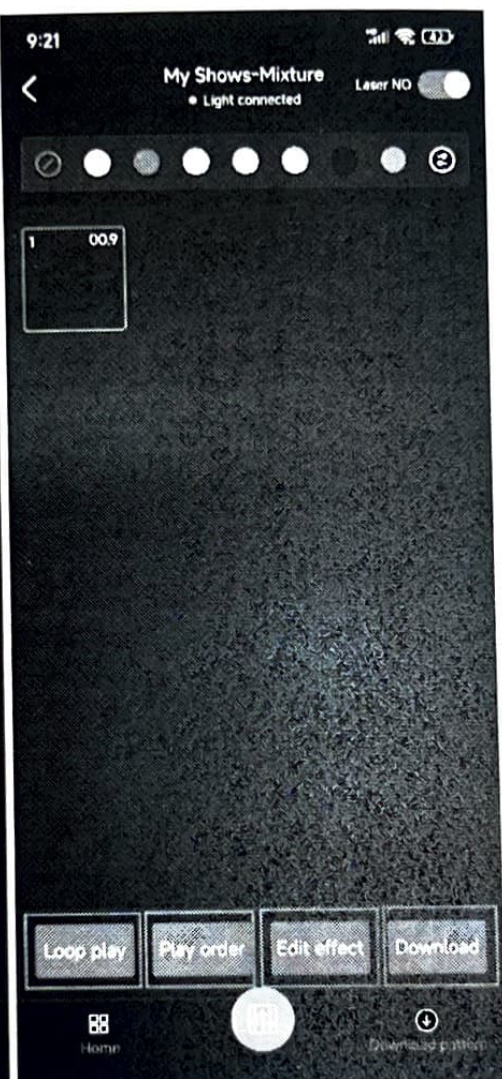
Dynamic Program: The platform comes with its own programs. Click to play the program, double-click to view program details. Double click to enter the program with three options: selective playback, loop playback, and downloading patterns. As shown in the following figure:



Equipment Program: The built-in program of the lighting device is divided into three functional options: lighting device effect, pattern, and console (if the lighting device supports this function). Click to switch between the functions. Click to play the program, double-click to view program details. Double click to enter the program with three options: selective playback, loop playback, and light saving playback. As shown in the following figure:

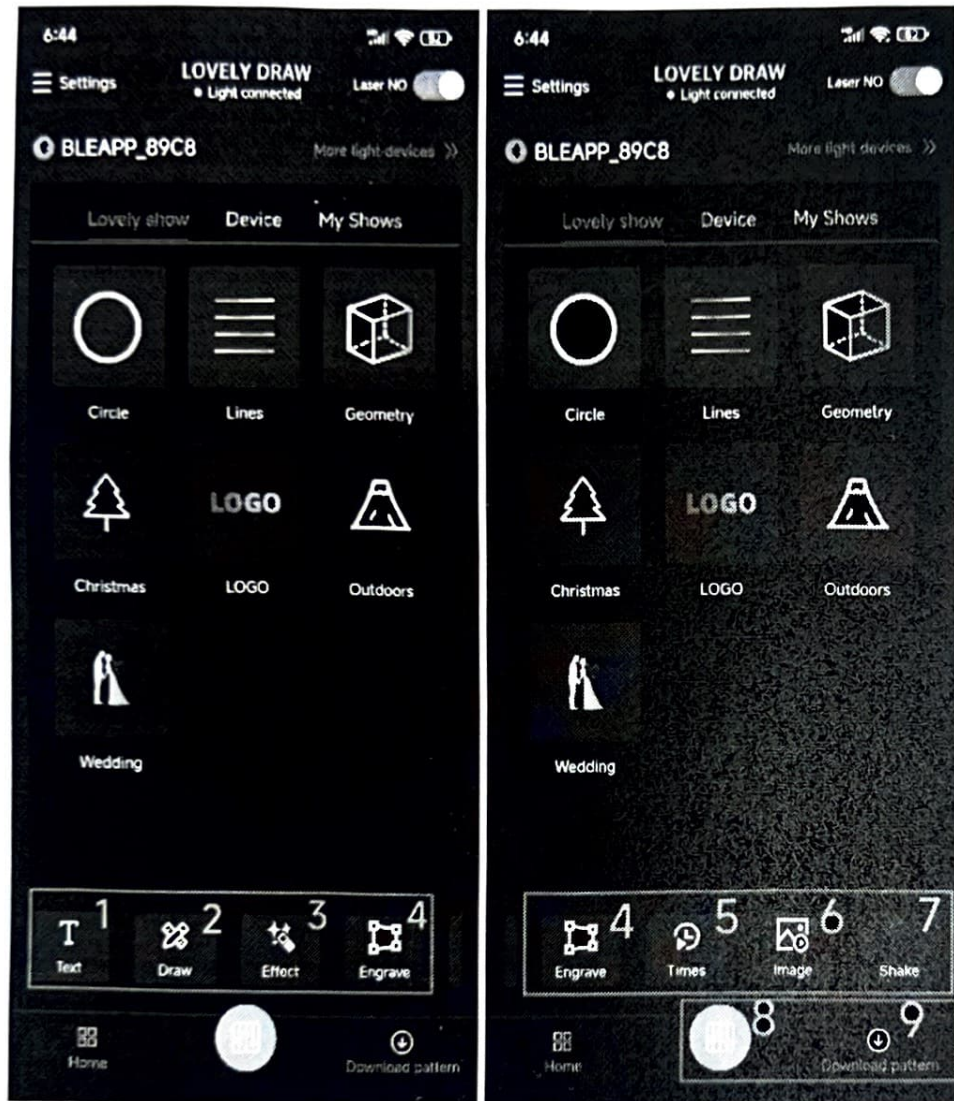


My Program: Stores self-produced programs. My program is divided into two functional options: effects and patterns. Click to switch between them. Click to play the program, double-click to view program details. Double click to enter the effect program, which has four options: loop playback, sequential playback, editing effects, and downloading effects. Double click to enter the pattern program, which has four options: loop playback, playback order, program editing, and pattern download. As shown in the following figure:





Three、 Introduction to the functions of the bottom navigation bar
Function directory, as indicated in the following figure:



1. Text playback: Users independently create text patterns and play them in real-time
2. Drawing creation: Users independently create patterns and play them in real-time
3. Effect programming: Users independently create effect programs and play them in real-time
4. Laser engraving: Users independently create laser engraving programs and play them in real-time
5. Timed playback: Users can independently set the playback cycle and time to schedule the playback list of programs
6. Image conversion: Users select or take images, recognize the images and convert them into patterns
7. Shaking head playback: Users can independently play and edit scenes of shaking head programs, and the lighting device supports this function
8. Real time control: Real time adjustment of lamp equipment parameters
9. Download patterns: Download patterns stored in the program library to the lighting device