



TriptoVision
Trusted LED Supplier

AP2.5-Series Production

LED Poster

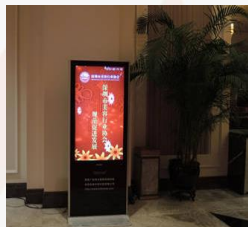


Overview

- ◆ **LED advertising board:** as a new generation of intelligent equipment, LED advertising board constitutes a complete advertising broadcast control system through terminal software control, network information transmission and multimedia terminal display, and makes advertisements through displaying pictures, texts, videos, small plug-ins (weather, exchange rate, etc.) and other multimedia materials.
- ◆ **Compared with traditional inkjet and sticker advertisements,** advertising board has a natural advantage – **interactivity,** which makes it equipped with public service functions, to attract customers to the contents.
- ◆ **The development direction of advertising board:** intelligent interaction, public services, entertainment interaction, etc.
 - With the development of digital signage, the advertising machine, as a new type of media, is growing at a rapid pace. Aiming at office buildings, shopping malls, banks, supermarkets, hotels, exhibition halls, communities, transportation hubs and other public places or crowded areas, the advertising board can greatly improve the information coverage.



Corporation



Hotel service



Retail



Public places



Transportation hub

Comparison of LED and LCD advertising board

Compared with the LCD advertising board, the LED advertising board has the natural advantages of high brightness, full screen display and long lifespan, **enabling it to completely replace the LCD advertising machine market.**



	LED advertising board	LCD advertising board
Lifespan	Low light decay, 100,000h lifespan	High light decay, less than 40,000h lifespan
Display dimension	Full screen display	Half screen display
Installation	horizontal and vertical lifting, wall mounting, seat mounting, diagonal mounting (cascade connection), creative installation	Seat mounting
Brightness	High brightness, long viewing-distance, available for different environments	Low brightness, short viewing-distance, only available for indoor environments
Refresh rate	High refresh rate	Low refresh rate
color	High color reproduction	Average color reproduction
Size	Customizable size	Fixed size
Environment	Industrial grade product, available for different environments	Commercial grade product, only available for indoor environment
Viewing angle	160°	120° -140°

Ultra-light, ultra-thin

The whole panel weight is about 50kg,
36% lighter than LCD advertising
board;

The thickness is only 48 mm, more
than 40% thinner than LCD advertising
board

Display dimension: 640*1920mm



Intelligent cluster control



- ◆ Users can change the contents through WIFI or USB
- ◆ Users can directly control the screen and release the programs through the APP on mobile phone
- ◆ Users can control the screen playback through Windows, IOS and Android devices



- ◆ Networkable remote release of the updated content of the screen by one-click button
- ◆ Networkable monitoring screen operating status
- ◆ Networkable playback, unified management of multiple displays



Multi-function ports

- Switch button-Dual mode switch
- SIM card slot
- Audio Output
- HDMI1.3 Input
- USB2.0 Port
- RJ45 Port
- WI-FI Antenna
- 4G Antenna
- Reset

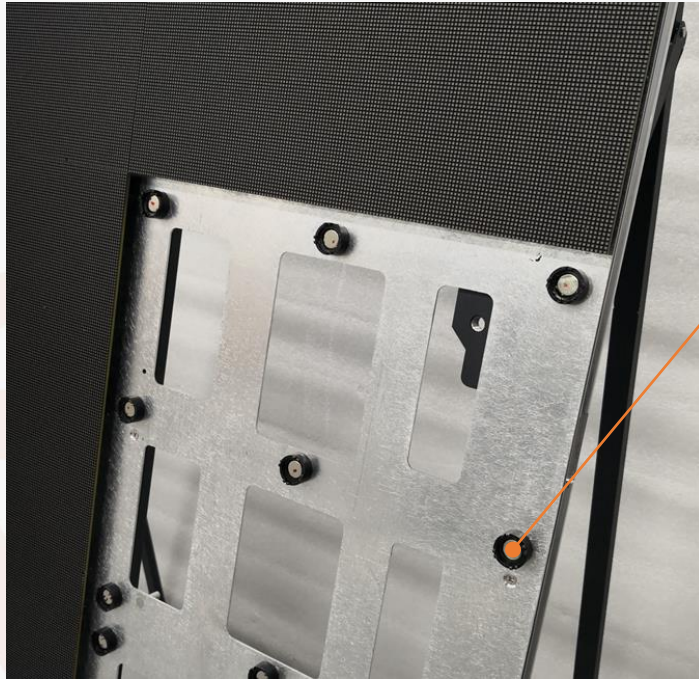


Product details



4G Antena

WI-FI Antena



**LED Modules Magnetic
Front maintainance**



**Straight support
base with wheels
and dismountable**

NOVA STAR

Taurus Series Multimedia Players




01 Introduction

The Taurus series products are multimedia players created for full-color LED displays. The Taurus series multimedia players integrate playback and sending capabilities, allowing users to publish content and control LED displays with a computer, mobile phone or tablet. Working with our superior cloud-based publishing and monitoring platform, the Taurus enables users to manage LED displays from an Internet-connected device anywhere, anytime.

02 Required Software

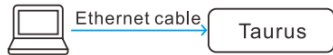
The typical connections and login of the Taurus series products require the following software: ViPlex Handy, ViPlex Express and NovaLCT.

Software	Operating System	Download
ViPlex Handy	Android	
	iOS	
ViPlex Express	Windows	https://www.vnnox.com/download
NovaLCT	Windows	

Control system introduction of TB box

03 Typical Connections

✦ Ethernet Cable



Required configuration:
In ViPlex Express, turn on DHCP service.

✦ Wired LAN



Required configuration:
Make sure the DHCP service in ViPlex Express is turned off and set up the computer to obtain an IP Address automatically.

✦ Wi-Fi AP

The Taurus series products come with Wi-Fi AP. The default SSID is "AP+Last 8 digits of the SN" (for example: AP10000033), and the default password is "12345678".



No configuration required.

✦ Wireless LAN

This connection method is available for products that support Wi-Fi Sta.



Required configuration:
In ViPlex Express, log in to the Taurus and connect to the Wi-Fi AP of the router.

04 Login

After hardware connection, log in to the Taurus with the software to configure screens, publish solutions, upgrade firmware, and bind the Taurus to the cloud platform.

The login user name of the Taurus is "admin" and the default password is "123456". You are advised to change the default password to enhance information security.


Note:


For more information about the software, please see their user manuals. You can also scan the QR code on the product to view the online help for ViPlex Handy.

✦ Log In to Taurus with ViPlex Handy

Step 1 Open ViPlex Handy and go to the **Local Devices** page.

ViPlex Handy can automatically detect the Taurus and refresh the local device list. You can also swipe down to manually refresh the local device list.

 : The Taurus is online and you can log in to it. Go to Step 2.

 : The Taurus is offline and you cannot log in to it.

Step 2 Tap **Connect** next to a Taurus device name.

Step 3 Enter the password for the "admin" user and tap **OK**.


Upon successful login,  is displayed and ViPlex Handy automatically saves the account information.

✚ Log In to Taurus with ViPlex Express

Step 1 Open ViPlex Express and go to the **Terminals** page.

Step 2 Click **Refresh** to refresh the Taurus device list.

After detecting the Taurus, ViPlex Express will try to log in to the Taurus with the default account or the account used for last login.

 : The Taurus is online and you can log in to it. Go to Step 3.

 : The Taurus is offline and you cannot log in to it.

 : You have successfully logged in to the Taurus.

Step 3 Click **Connect** next to the Taurus information.

Step 4 Enter the password for the “admin” user and click **OK**.

Upon successful login, ViPlex Express automatically saves the account information.

✚ Log In to Taurus with NovaLCT

Step 1 Open NovaLCT.

Step 2 From the menu bar, choose **User > Media Player Login**.

Step 3 In the **Terminal List** dialog box, click **Refresh**.

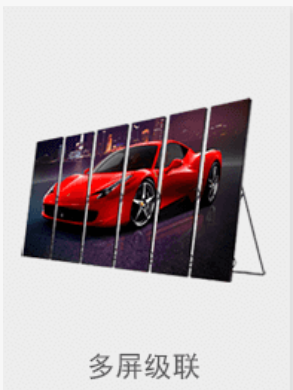
Step 4 Select a Taurus device and click **Connect System**.

Step 5 Enter the user name and password, then click **OK**.

Upon successful login, the monitoring information of the Taurus is displayed on the main window of NovaLCT.

Multiple Installation

Available for horizontal and vertical lifting, seat mounting, diagonal mounting (cascade connection), creative installation, etc.



Product parameters

Product parameters	AP2.5
LED Type	Black SMD2020
Pixel pitch (mm)	2.5
Frame dimension (mm)	652*1936*450
Display dimension (mm)	640*1920
Module dimension (mm)	320*160
Panel weight (kg)	50
Panel resolution	256*768
Brightness (nit)	600
Refresh rate (hz)	1920
Grayscale (bit)	14
Power consumption	460/153
Drive mode scan	1/32
Viewing angle (H/V)	170/170
Maintenance	modules front maintenance, others rear maintenance



TriptoVision
Trusted LED Supplier



THANK YOU !

