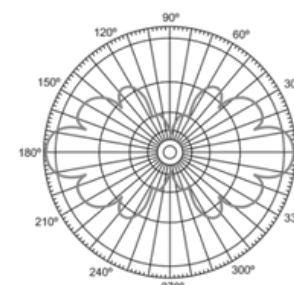
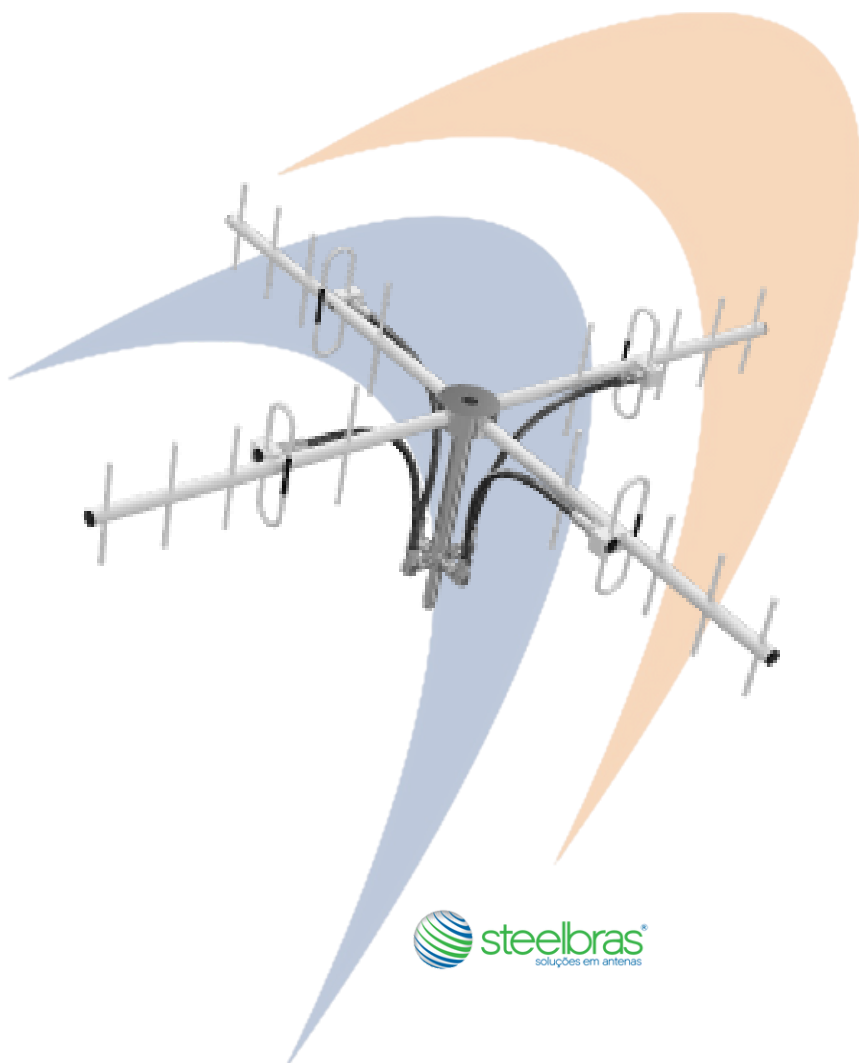
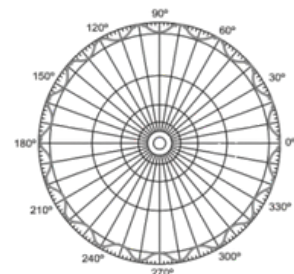


ANTENA BASE UHF 2X1/2 ONDA COL 420 À 480 MHZ 3DB



Vertical

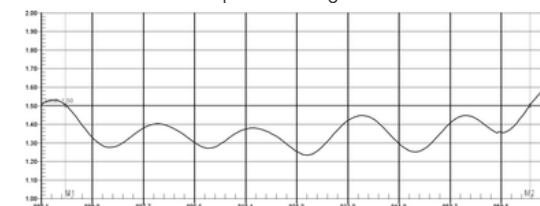


Horizontal

ESPECIFICAÇÕES

Frequência	420 - 480 MHz
Potência Max.	250 W
Impedância	50 Ω
VSWR	≤ 1,5:1
Polarização	Vertical
Ganho	7,95 dBi
Conector	N Fêmea
Vento Max.	100 Km/h
Largura	1044 mm
Altura	386 mm
Peso	4,335 Kg

EXEMPLO: Veja abaixo o gráfico de VSWR



T SM Antennas – Rod. RST 287, 9900 – Bairro Camobi – Santa Maria / RS – Brasil
E-mail: vendas@tsm.com.br Fone: +55 (55) 991-542-591 Whatsapp: +55 (55) 2101-3314

